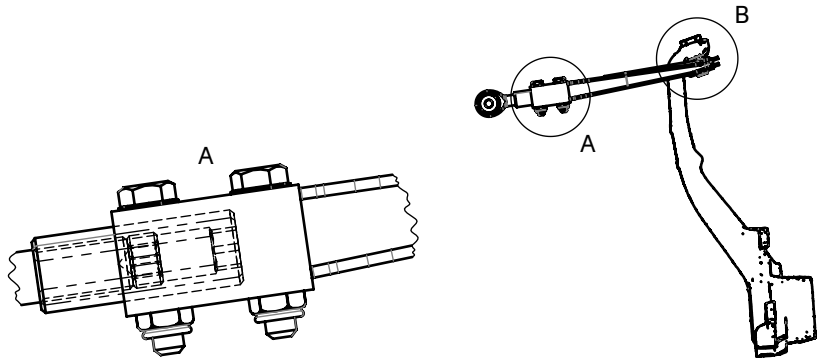


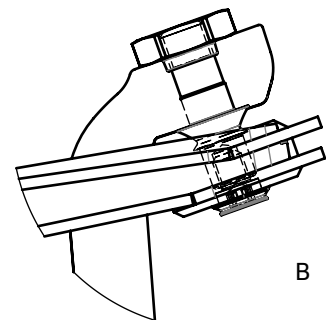
Overall view of assembled components in the right corner

All lengths (exc. tie rod) are pre set by Wisefab. No need to adjust before alignment.



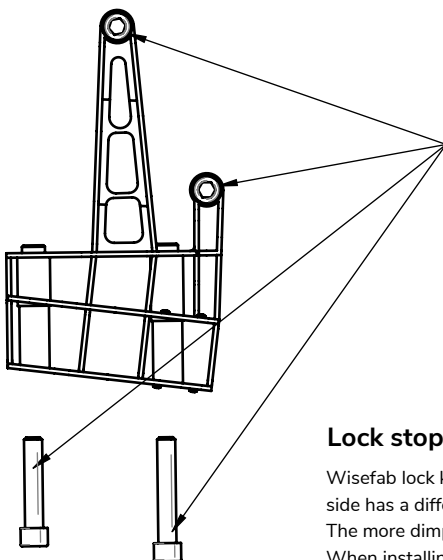
Installing the Upper A Arm

Upper arm will be mounted to the lower side of the non cut OEM knuckle
 When installing make sure that the knuckle side joint is tilted upwards.
 Upper A arm has built in camber/caster adjustment with Double Adjusters.
 Adjusting both adjusters the same way - camber is adjusted.
 Adjusting adjusters the opposite way - caster is adjusted.



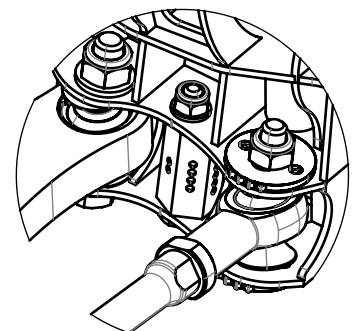
Installing the Add-On

Install with caution, fitment with knuckle can be a little tight.
 50mm bolt length - brake caliper mount
 60mm bolt length - Lower control arm side
 70mm bolt length - Tie rod side



Lock stopper adjustment

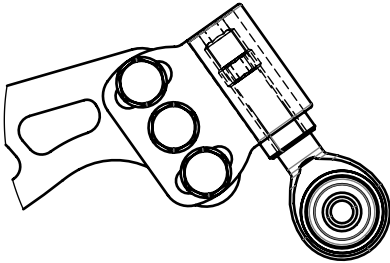
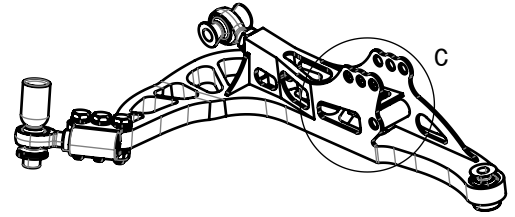
Wisefab lock kits are equipped with hexagonal lock stoppers, where each side has a different offset.
 The more dimples, the more offset and by that less usable lock.
 When installing, make sure that Tie rod is not binding in any way.



If you still have some trouble installing the kit, contact us at sales@wisefab.com, or call us +372 5562 5669

Installing the Lower Control Arm

Lower Control Arm has a Double Adjuster for easy caster and wheel position adjustment.



Motion ratio and Anti-rollbar

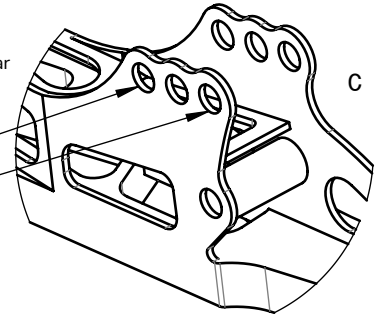
Anti-roll bar uses OEM lower joint. When using OEM Anti-roll bar it limits the useable lock.

You can adjust ride/roll stiffness by changing the coilover mounting point on the control arm.

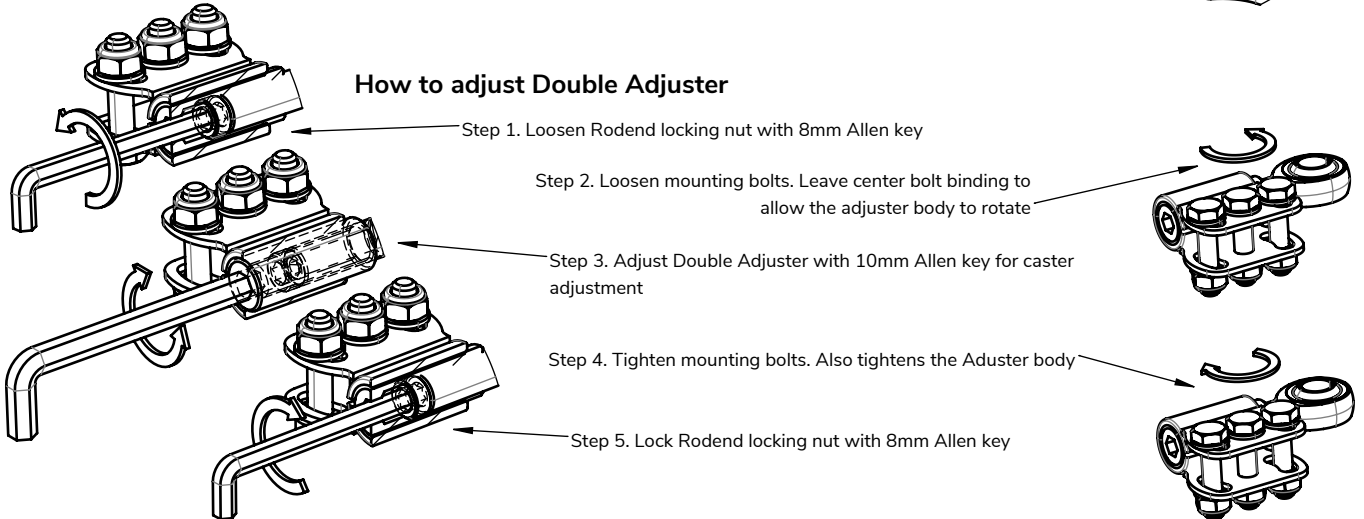
Center is the OEM location.

Moving it inwards, ride/roll would be softer

Moving it outwards, ride/roll would be stiffer



How to adjust Double Adjuster



Recommended Alignment Specs

Camber: $-4^{\circ} \pm 0.5$

Caster: $5.4^{\circ} \pm 0.5$

Toe with 17" wheel: 2mm out total (0.26° or 15" and 36" total)

Wheel size: Max 18" 8.5" wide ET35

Wheel backspacing (A) max: 18" Wheel - 150mm

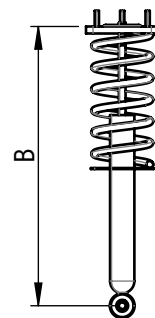
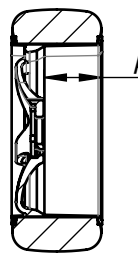
Coilover length (B): Rideheight: 444mm

Maximum: 520mm

Minimum: 415mm

At coilover minimum length, make sure that knuckle is not hitting the car body.

In case of interference, make some body clearance or adjust bump stop.



Important information

After installment check for clearance issues between car body and other suspension components. Make sure that nothing is fouling throughout all of suspension travel with suitable wheel. For that the Coilover has to be removed. In case of interferences make corrections in alignment or limit useable lock.



If you still have some trouble installing the kit, contact us at sales@wisefab.com, or call us +372 5562 5669