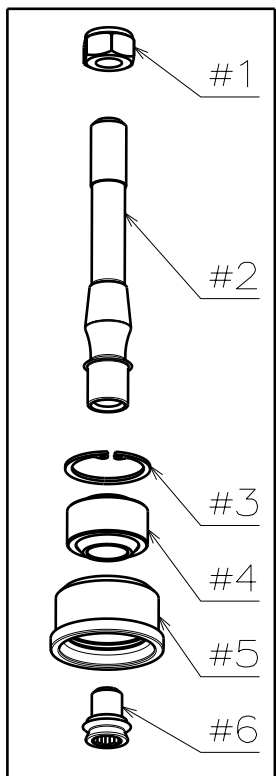
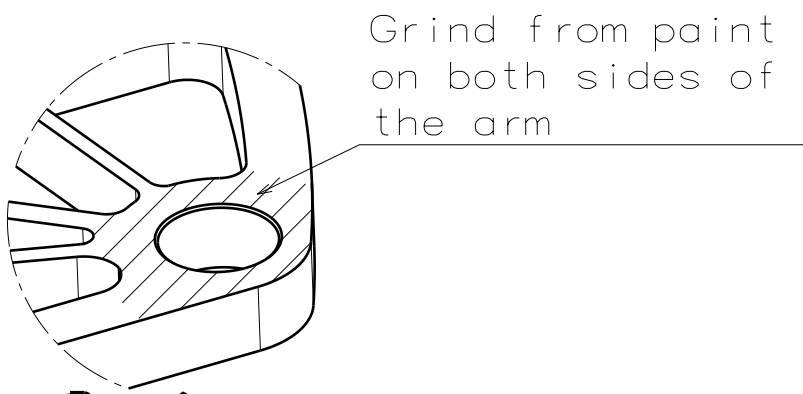


Installing the upgrade kit for Wisefab BMW e30/36/46 lower control arm.

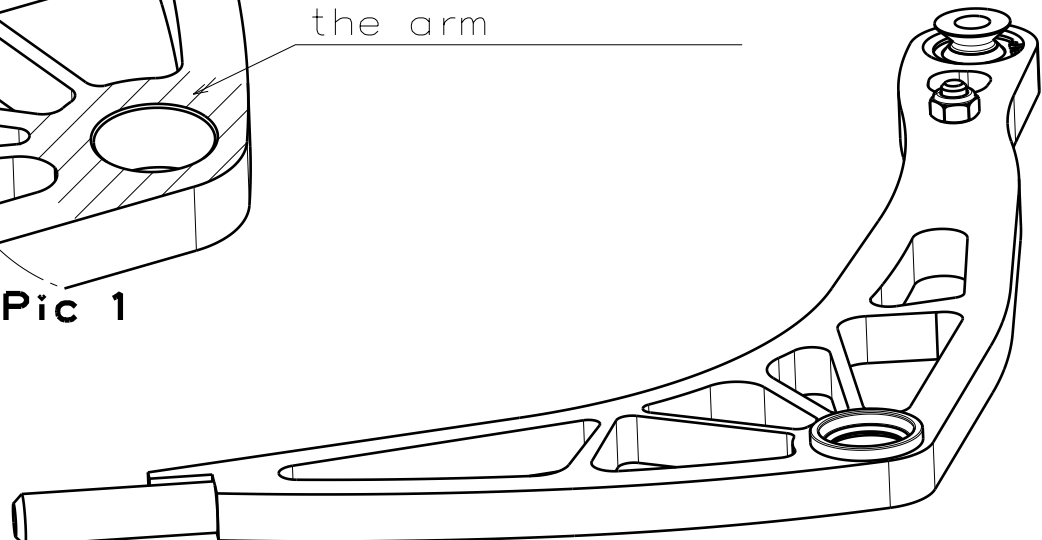
Parts



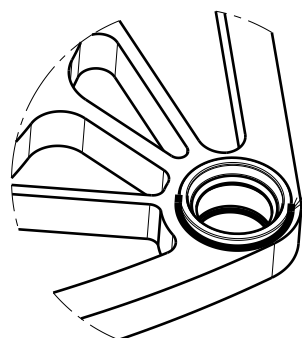
- Step 1: Uninstall the old joint
- Step 2: Grind the paint around the joint hole. Pic 1.
- Step 3: Install part #5 from the bottom of the arm. Pic 2.
- Step 4: Weld part #5 to the arm. Pic 3, Pic 4.



Pic 1

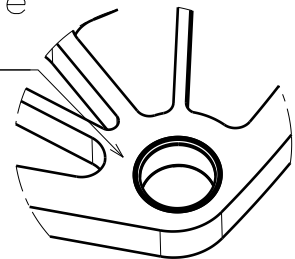


Pic 2



Pic 3

Weld around part #5 on both sides of the arm.



Pic 4

Wisefab strongly recommends all weldings to be done by a profesional welder.

- NOTE: Let the arm cool down after welding
- Step 5: Install the sperical #4 and internal circlip #3
 - Step 6: Install part #2 to the car chassis and tighten the nut #1
 - Step 7: Install the arm to part #2 and fasten it with bolt #6