

## Wisefab Nissan S-Chassis steering rack relocation kit installation guide

1. If possible sandblast the subframe



2. Cut out the templates, which are at the end of the book.

Dotted line on template is for positioning, bold solid line for marking the cutting line.

In a case you printed out the manual yourself, then there is a scale check line 127mm or 5" long. If actual measurement is not that, then check your printing settings and reprint it until actual measurement is 127mm.



If you still have some trouble installing the kit, contact us at [sales@wisefab.com](mailto:sales@wisefab.com), or call us +372 5562 5669

3. Place the top templates to subframe, like shown on picture below. Double sided tape is useful for placement



4. Mark the edges



5. Place the back side templates



6. Mark the edges



7. Place the bottom plane templates



8. Mark the edges



9. Drill the A-arm rear 12mm tab holes to 14mm on left and right side.



If you still have some trouble installing the kit, contact us at [sales@wisefab.com](mailto:sales@wisefab.com), or call us +372 5562 5669

10. Cut the marked lines



If you still have some trouble installing the kit, contact us at [sales@wisefab.com](mailto:sales@wisefab.com), or call us +372 5562 5669

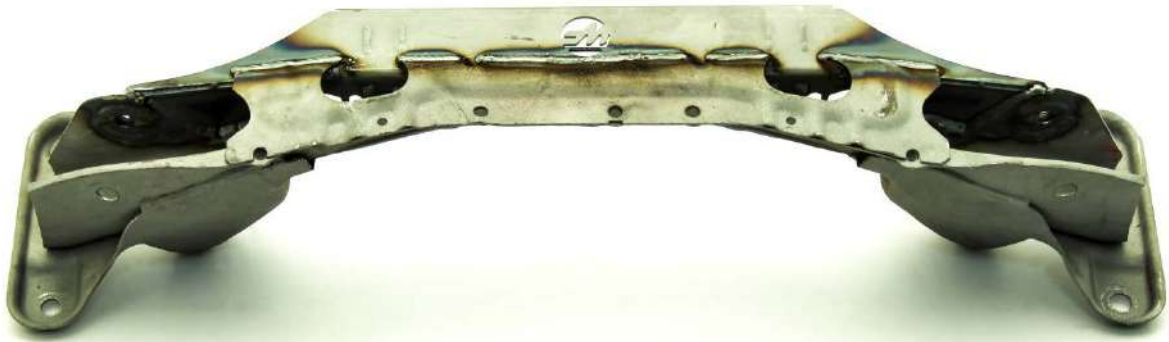
- Fit the rack relocation insert to cut subframe. Be sure it fits in freely. If it does not fit freely, then find out high spots and cut more. When it fits freely, then assemble also spacers between the tabs with 14mm bolts and welding jig. In case the subframe is slightly bent, then moderate force might be needed for fitment. Install the top brace to avoid deformation when welding the insert.



## 12. Tackweld the insert

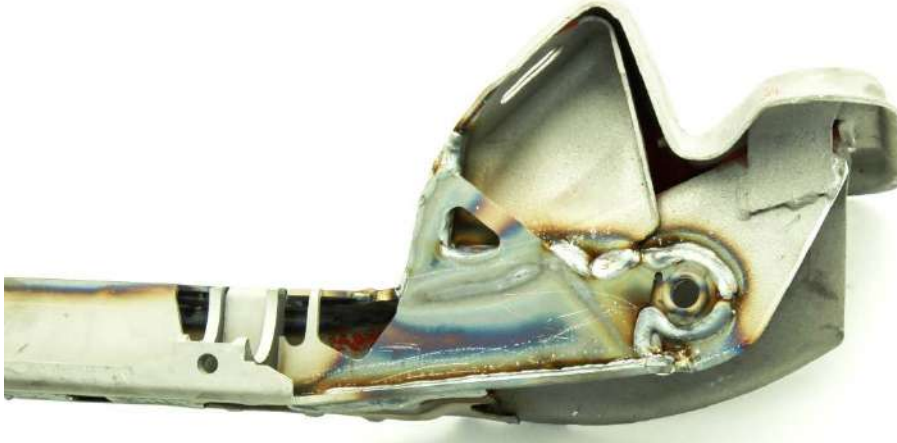


13. Weld the insert. The jig and the spacers need to be mounted, when welding!  
 After full welding, remove the spacers and jig





14. For being Formula Drift legal, the insert needs to be cut through between the tab and center part. Then it is not defined as tab reinforcement, but welded washer. Be careful not to cut through OEM subframe. Angle grinder can be used with worn or smaller size disk ~80mm diameter.  
NB! If the subframe does not have to be FD legal, then this cut is not necessary.



If you still have some trouble installing the kit, contact us at [sales@wisefab.com](mailto:sales@wisefab.com), or call us +372 5562 5669



**FOR RACING  
USE ONLY**



If you still have some trouble installing the kit, contact us at [sales@wisefab.com](mailto:sales@wisefab.com), or call us +372 5562 5669

15. Clean and paint.



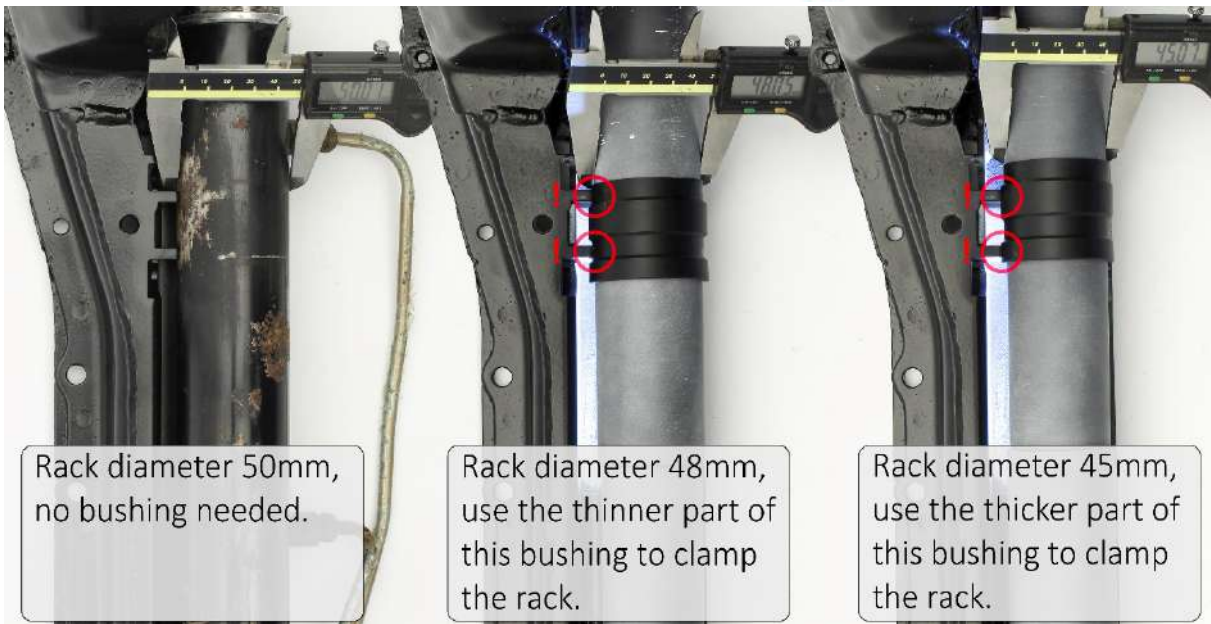
16. Bushing nr1 goes to pinion side. Bushing nr2 goes to cylindrical side if needed. There are 3 possible rack diameters: 50mm, 48mm and 45mm. It is only needed for 48mm and 45mm diameter rack. If the rack is 50mm, then it is not needed. See the pictures below.



#1



#2



Rack diameter 50mm,  
no bushing needed.

Rack diameter 48mm,  
use the thinner part of  
this bushing to clamp  
the rack.

Rack diameter 45mm,  
use the thicker part of  
this bushing to clamp  
the rack.



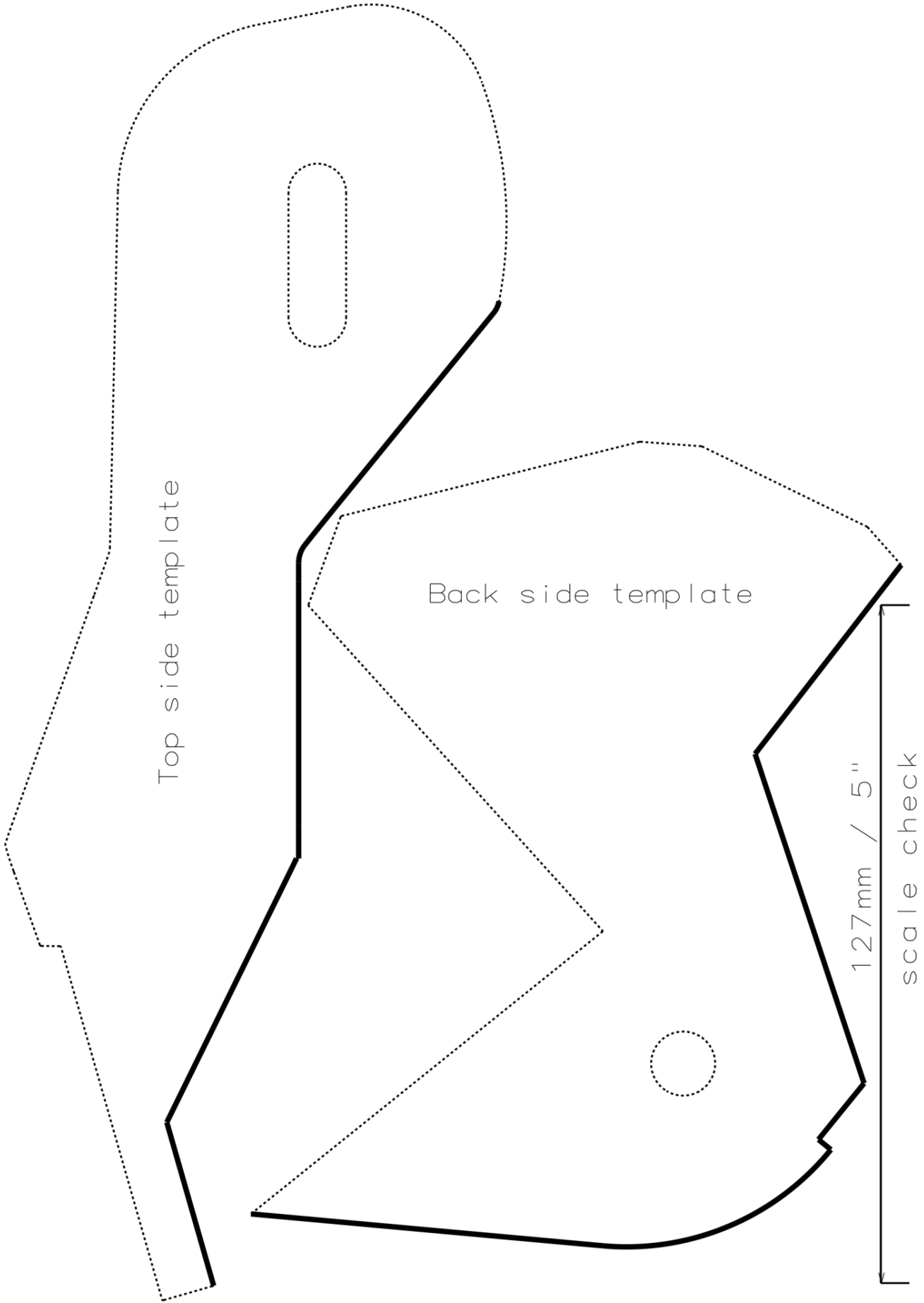
If you still have some trouble installing the kit, contact us at [sales@wisefab.com](mailto:sales@wisefab.com), or call us +372 5562 5669

17. The subframe with rack relocation is symmetrical, so it works for LHD and RHD. The picture below is LHD. For RHD the clamps and plastic bushings need to be swapped between left and right



18. Assembled unit



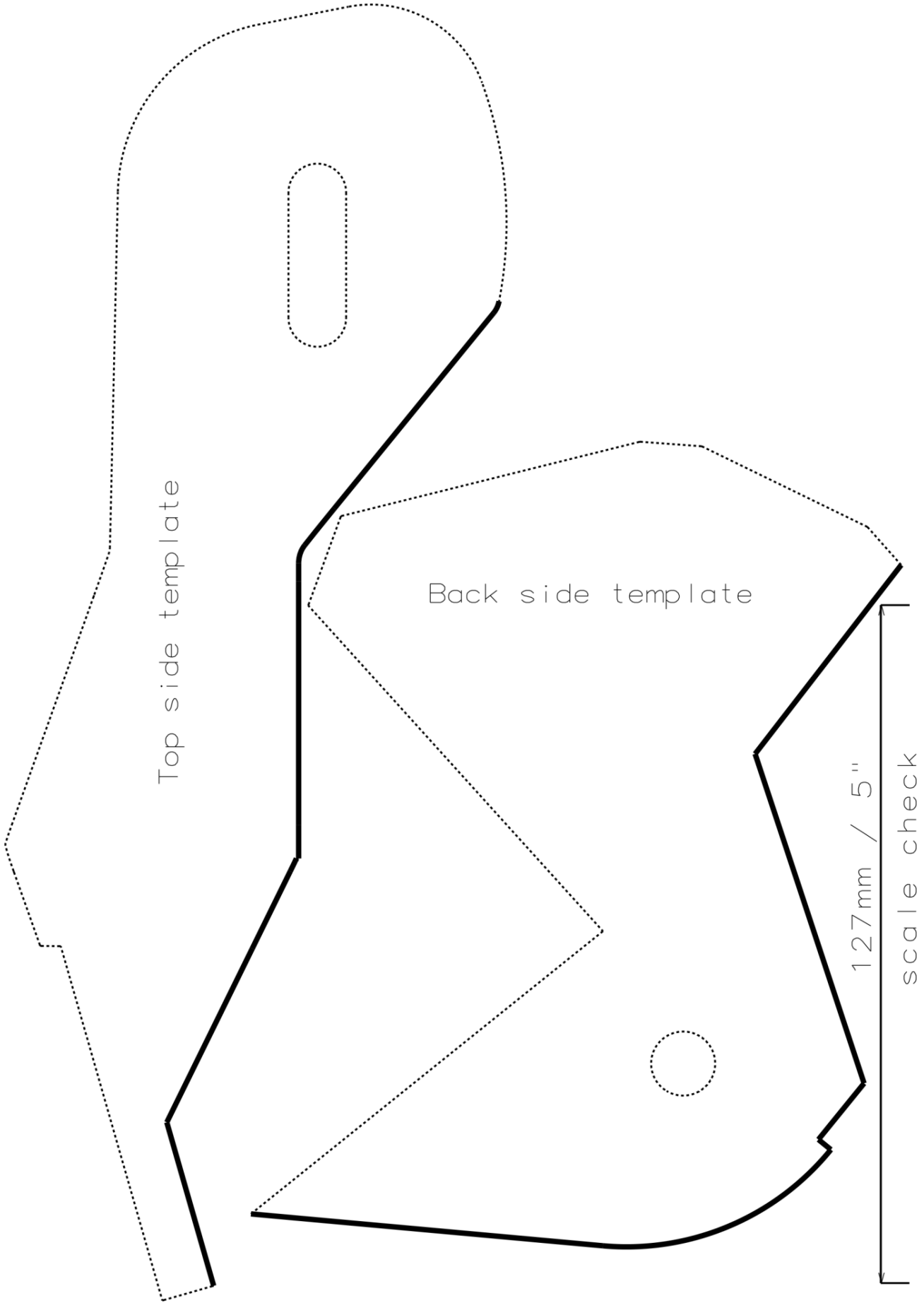


Top side template

Back side template

127 mm / 5"  
scale check





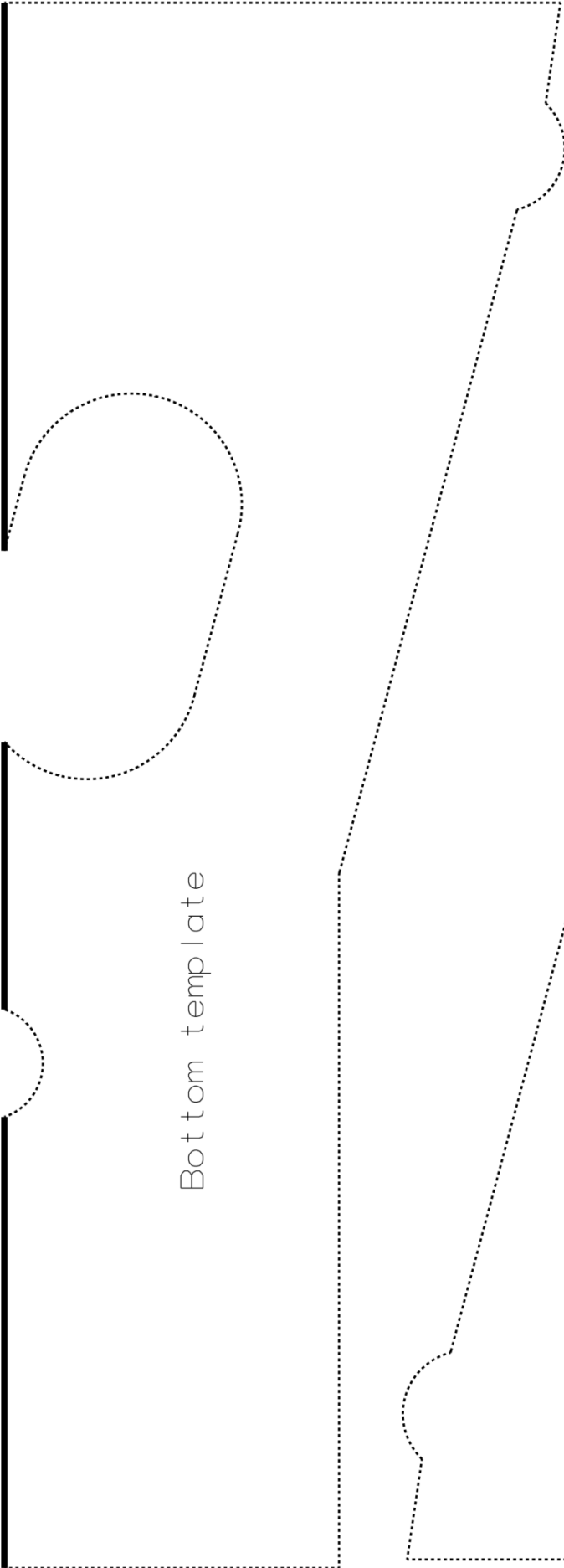
Top side template

Back side template

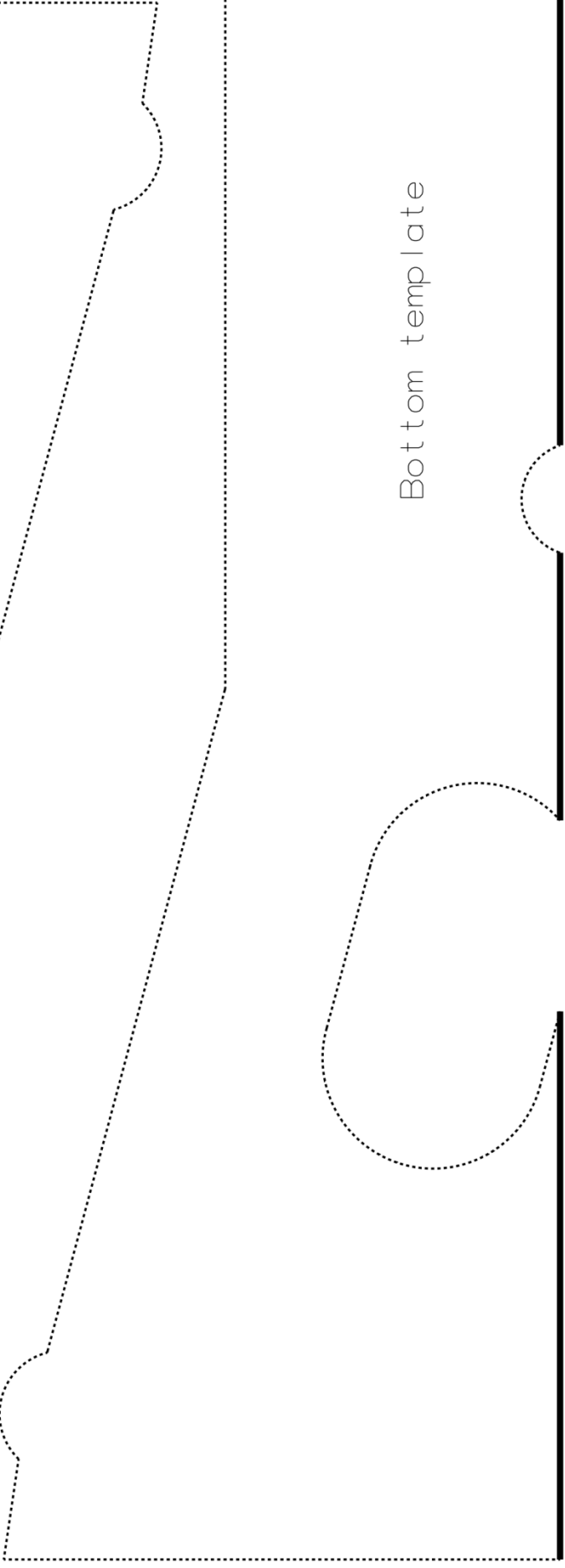
127 mm / 5"  
scale check





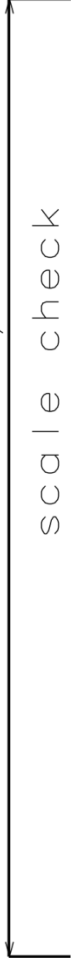


Bottom template



Bottom template

127 mm / 5"



scale check



