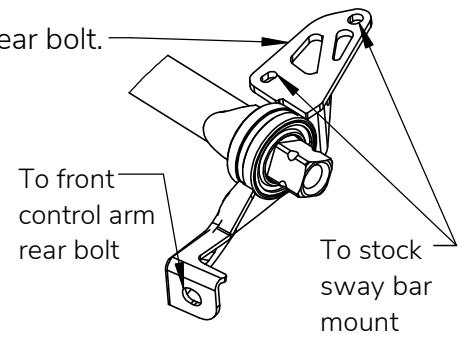
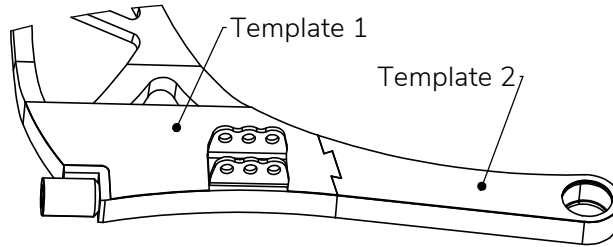


BMW E90 Front Sway Bar

1. Install the sway bar using stock sway bar mounts and front control arm rear bolt.

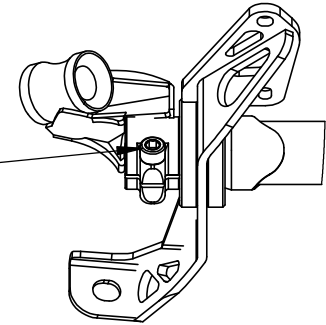
2. Use the templates in this manual to position the sway bar link bracket to the control arm.



3. Clean the control arms from paint and weld the brackets all around

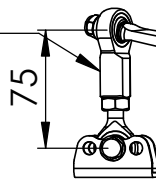
4. Attach the sway bar arms to the sway bar hex.

Push the arm against the bearing and tighten the M10 bolt.

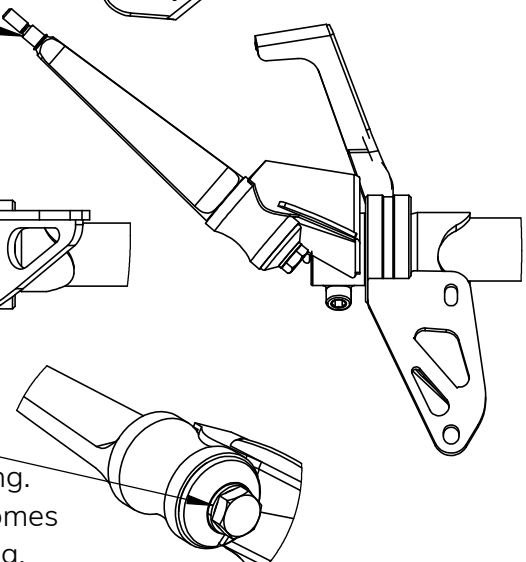


5. Attach the sway bar blade to the sway bar arm.

6. Attach the link to the blade and set the length to approximately 75mm while car is on the ground and level. Make sure the links are not binding.



7. To adjust the sway bar stiffness from the blade, loosen the blade bolt half a turn and if necessary tap slightly on the bolt to unseat the blade from its locked position.



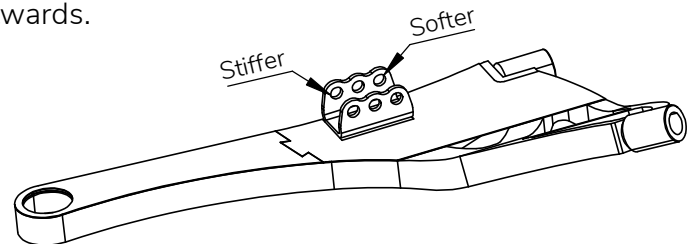
8. When the blade is perpendicular to the ground it is in the stiffest setting. When the blade is rotated from this position, the sway bar stiffness becomes gradually softer. When it is parallel to the ground it is in the softest setting.



9. Blade installed in the stiffest setting.



10. The sway bar motion ratio can also be adjusted from the control arm mount by moving the link either inwards or outwards.

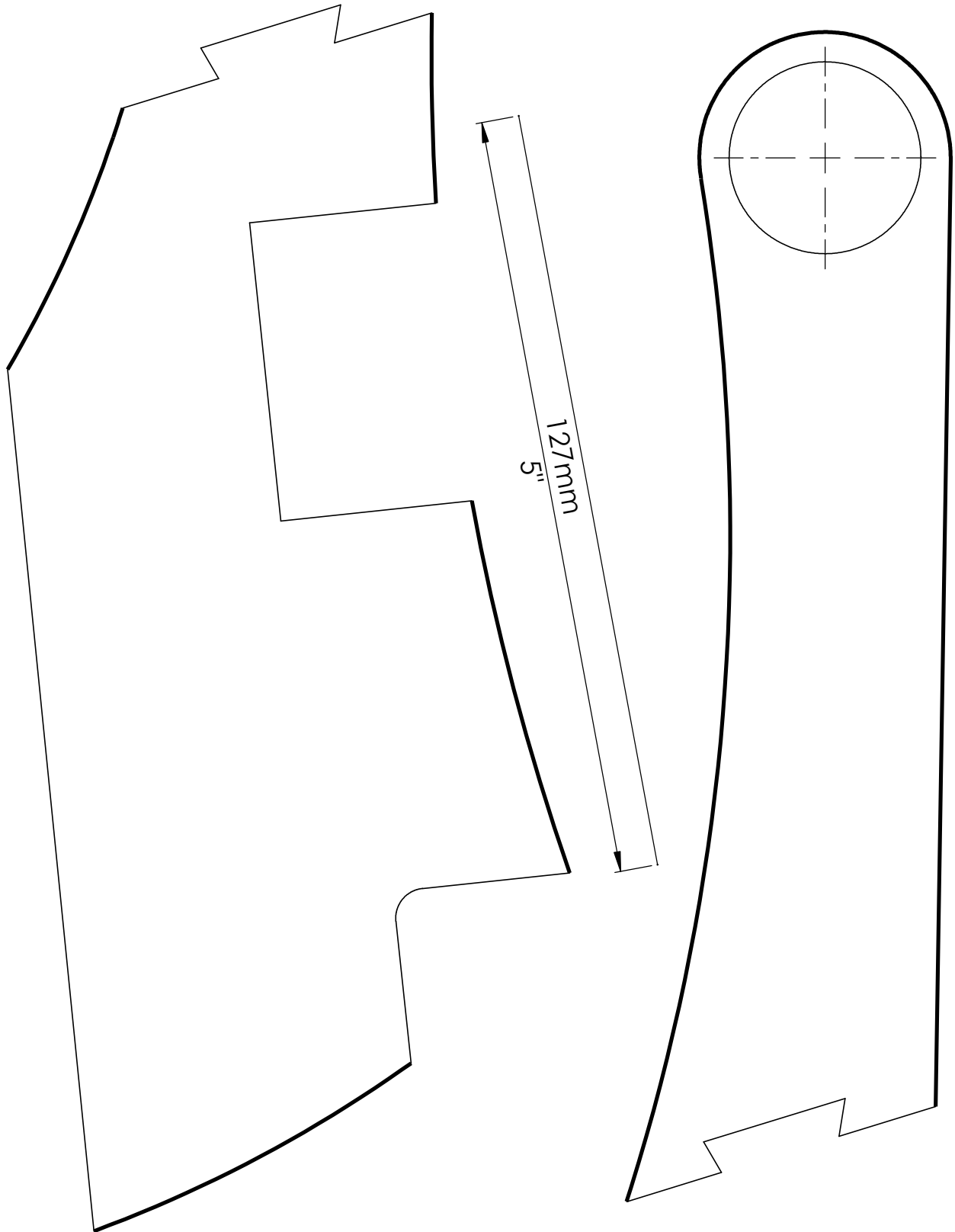


11. After the install, check the clearance with body, brake calipers and tyres in all wheel positions. Adjust lock stoppers if necessary.



If you still have some trouble installing the kit, contact us at sales@wisefab.com, or call us +372 5562 5669

Use these templates to position the sway bar link bracket to the control arm. Make sure the scale is right. Otherwise adjust your printer settings and print again.
Bold solid line is for positioning the template.



If you still have some trouble installing the kit, contact us at
sales@wisefab.com, or call us +372 5562 5669