

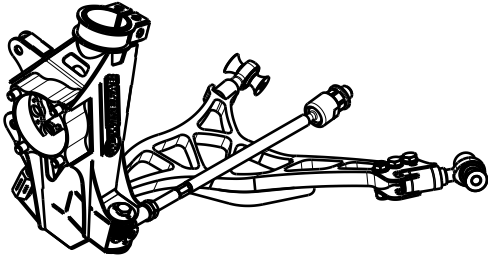


BMW G80/G87 Front lock kit

Overall view of assembled components in the right corner

This kit will fit to BMW G model M2, M3 and M4

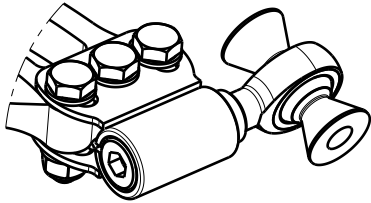
All lengths (exc. tie rod) are pre set by Wisefab. No need to adjust before alignment. OE ARB can not be used with this kit.



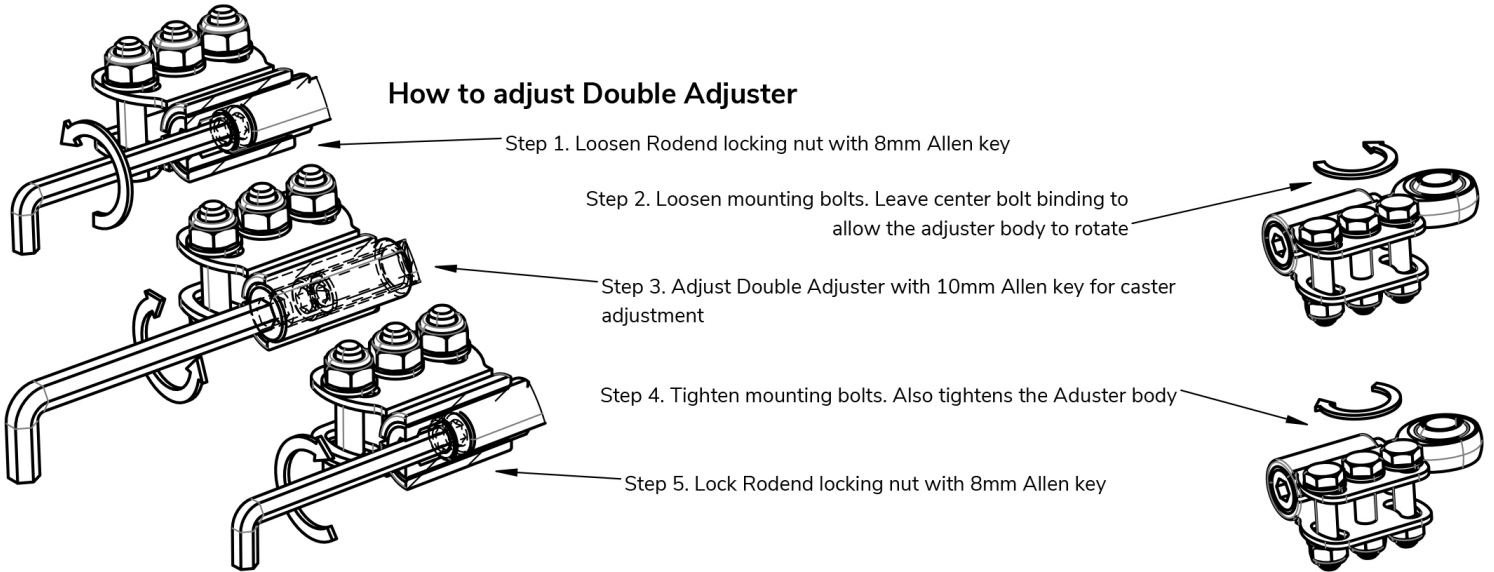
This kit works only with the E and F model non M 2, 3 and 4 series brakes and E90 wheel bearing. Wheel PDC will change to 5x120. G model M series brake calipers can only be fitted with adapters that has to be ordered seperatly with BMW E60 M5 brake discs (34 11 2 282 806 - right and 34 11 2 282 805 - left)

Installing the lower arms

Wisefab lower arms are one piece design, so tension rods are not needed anymore. Mount arms with stock bolts, we recommend using new ones. Caster can be adjusted from the lower control arm with the Double Adjuster.



How to adjust Double Adjuster



IMPORTANT!

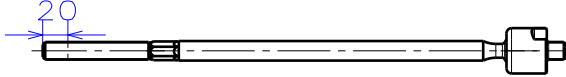
If the kit is installed check the clearance between car body, suspension components and the wheel with tire in all extent of the suspension travel. For that the spring needs to be removed. If there is clearance issues then change your wheel alligment or limit the suspension travel.



If you still have some trouble installing the kit, contact us at sales@wisefab.com, or call us +372 5562 5669

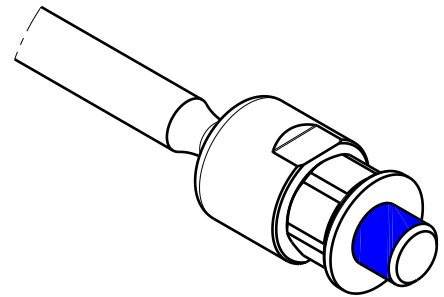
Steering rack

OE electric steering rack can be used. Then the inner tie rod has to be shorten by 20 mm. Other option is to use Wisefab rack conversion for BMW E90 hydraulic or electric steering rack. When choosing this option then do not shorten the tie rod.



Installing the rack spacer

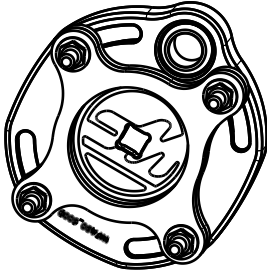
Use thread lock on the rack spacer.



Front right

Camber plate

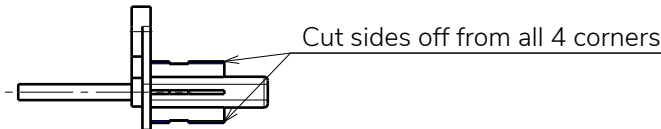
Driving direction ↑



Install the camber plate a way that the coilover fixing will be between the most forward and most outward top mount bolt. Small cut out in the strut tower may be needed to make room for the coilover upper fixing nut. Then there is no need to use two spacer plates. If you do not want to cut the strut tower use two spacer plates. A thin coilover upper fixing nut might be needed.

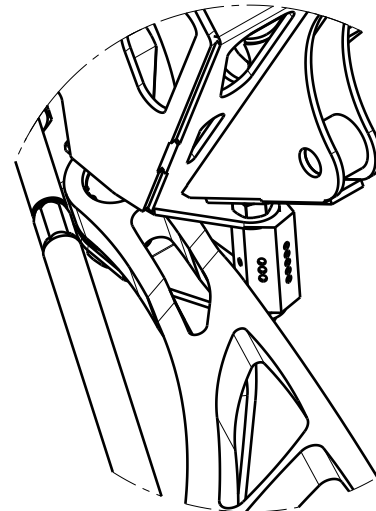
Wheel speed sensor

If there is a need for wheel speed sensor then cut OE wheel speed sensors sides to fit the knuckle.



Lock stopper adjustment

Wisefab lock kits are equipped with hexagonal lock stoppers, where each side has a different offset. The more dimples, the more offset and by that less usable lock. When installing, make sure that Tie rod is not binding in any way.

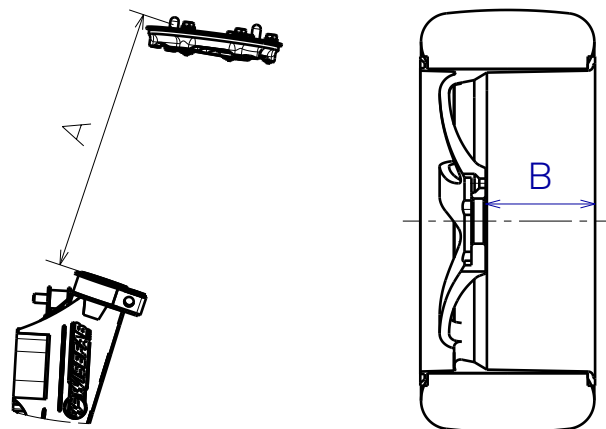


IMPORTANT!

If the lock stopper is set check the clearance between car body, suspension components and the wheel with tire in all extent of the suspension travel. If there is clearance issues then limit the steering lock more or change your wheel alligment.

Recommended alignment specs

- Camber: -4,5
- Caster: 5.7
- Toe: if ackerman is 0 or negative then toe is 2 mm, if ackerman is positive then toe is 0.
- Front track: 70 mm wider per side then the OEM
- Strut lenght (A) max: 420 mm
min: 290 mm
- Wheel backspace (B) max 19": 150 mm
18": 146 mm
17": 140 mm
- Some 17" wheels will not fit



If you still have some trouble installing the kit, contact us at sales@wisefab.com, or call us +372 5562 5669