

Nissan 350Z Narrow Front Lock Kit

This kit fits Nissan 350Z and 02-06 Infiniti G35 RWD. Stock brakes and bearings can be retained or upgraded to 370Z wheel bearing and/or brakes, in which case the bearing adapter ring must be discarded. The Wisefab kit substitutes the stock control arms, knuckle and tie rod. All lengths (excluding tie rods) are pre set by Wisefab. No need to adjust before alignment.

Installing the upper A arms

Upper arms are symmetrical left to right. Follow these instructions for tightening:

Installing the lower A arms

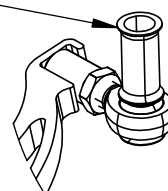
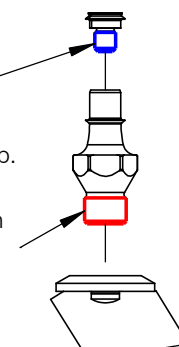
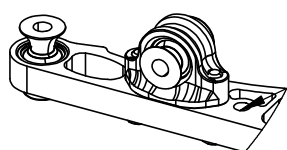
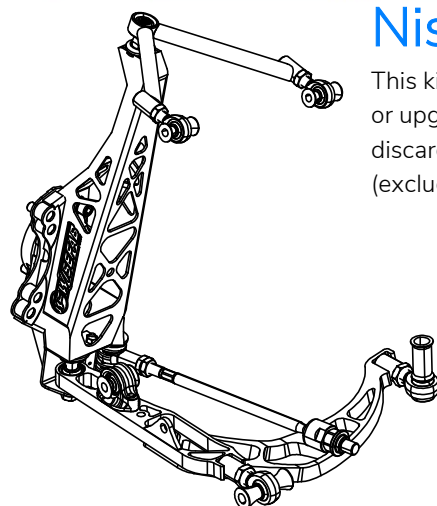
Use the long bushing on the top of the rear mount when installing the arms. Mount arms with stock bolts, we recommend using new ones.

35Nm, medium threadlocker

Installed from Wisefab. If replaced, tighten to 140Nm, high strength thread locker

Adjusting suspension stiffness

You can adjust motion ratio (ride/roll stiffness) by changing the coilover mounting point on arm. Moving it outwards, ride/roll will be stiffer. Moving it inwards, ride/roll will be softer.



Installing the tie rods

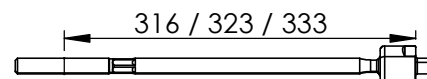
As there are different length racks available, the tie rod lengths are not exact and need to be cut shorter. Measure your rack.

If your rack is 705mm long, cut the tie rods to 316mm

If your rack is 690mm long, cut the tie rods to 323mm

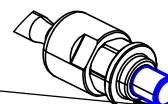
If your rack is 670mm long, cut the tie rods to 333mm

When installing the outer tie rod to the knuckle make sure that the rod end is at the upmost position and the supplied bushing is below it.



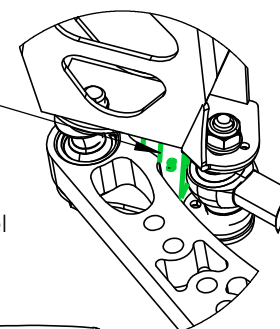
Installing rack spacer

Before installing the rack spacer use threadlocker on the thread between the steering rack and spacer.



Lock stopper adjustment

Wisefab lock kits are equipped with hexagonal lock stoppers, where each side has a different offset. The more dimples, the less usable lock. When installing, make sure that the tie rod is not binding in any way.



IMPORTANT!

When the lock stopper is set, check the clearance between car body, suspension components and the wheel with tire in all range of the suspension travel. For that the spring needs to be removed. If there is clearance issues then limit the steering lock more, limit the suspension travel or change your wheel alignment.

Recommended alignment specs

Camber: -5.5°

Caster: 5.7°

Toe: if ackerman is 0 or negative then total toe is 2 mm, if ackermann is positive then total toe is 0.

Front track: 70 mm wider per side than OEM

Strut lenght (A) :

max: 640 mm; min: 540 mm

Wheel backspace (B) :

max : 150 mm

Wheel diameter: 17" to 19"

Some 17" wheels will not fit.

