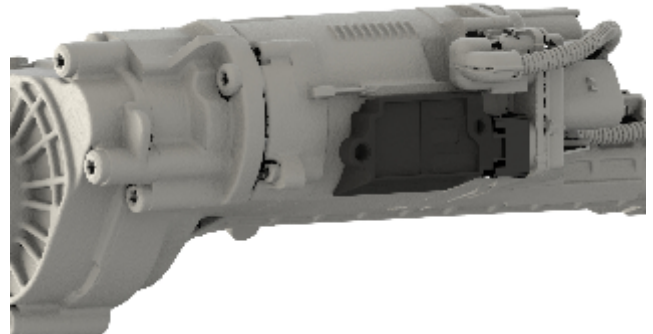


## BMW E90 EPS Control Module

This control module makes it possible to use the E90 electric steering rack without any extra BMW modules. There are 3 different power assist levels. This is done by the switch wire (green). Leaving the switch wire unconnected results in medium assist. Connecting the switch wire to the battery + results in high assist. Connecting the switch wire to the battery - (ground) results in low assist.

### Step 1

Connect the Wisefab EPS control modul to the steering rack.



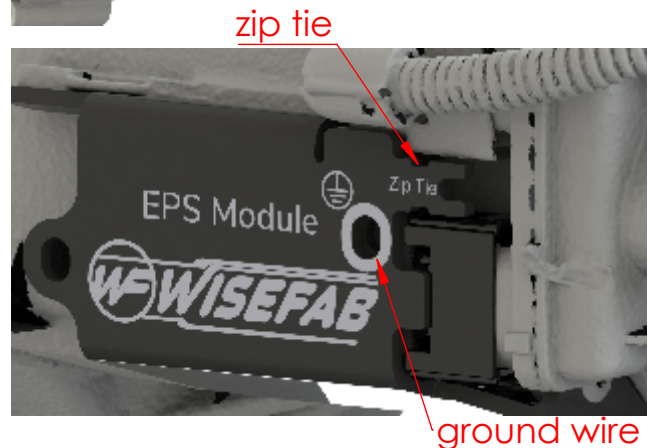
### Step 2

Remove one bolt from the steering rack. Install the cover plate to the Wisefab EPS control modul with the left side bolt. Use the supplied clip to fix the plate to the steering rack. Reinstall the removed bolt and fix it through the cover.



### Step 3

Use a zip tie to fix the wiring loom to the cover plate. Intall the ground wire underneath the right side cover plate bolt.



### Specifications

Temperature: Wisfab EPS control modul maximum 100°C  
Steering rack maximum 95°C  
Above 95°C power assist will be reduced  
Above 115°C assistance is turned off

Battery voltage: Operating voltage 10.5-16V  
Under 10.5V assistance is reduced  
Above 17V assistance is turned off

Fuse: Wisefab EPS control modul 5A  
BMW steering rack electric motor 100A

Wire gauge: BMW steering rack electric motor minimum 10mm<sup>2</sup> (AWG7)

Connector: BMW steering rack electric motor 61139145405

Connector pin: BMW steering rack electric motor for 12-14mm<sup>2</sup> wire 12521436649  
10-12 mm<sup>2</sup> wire 12527508006

Low assist - **Switch** to **Battery -**  
Medium assist - **Switch** not connected  
High assist - **Switch** to **Battery +**

