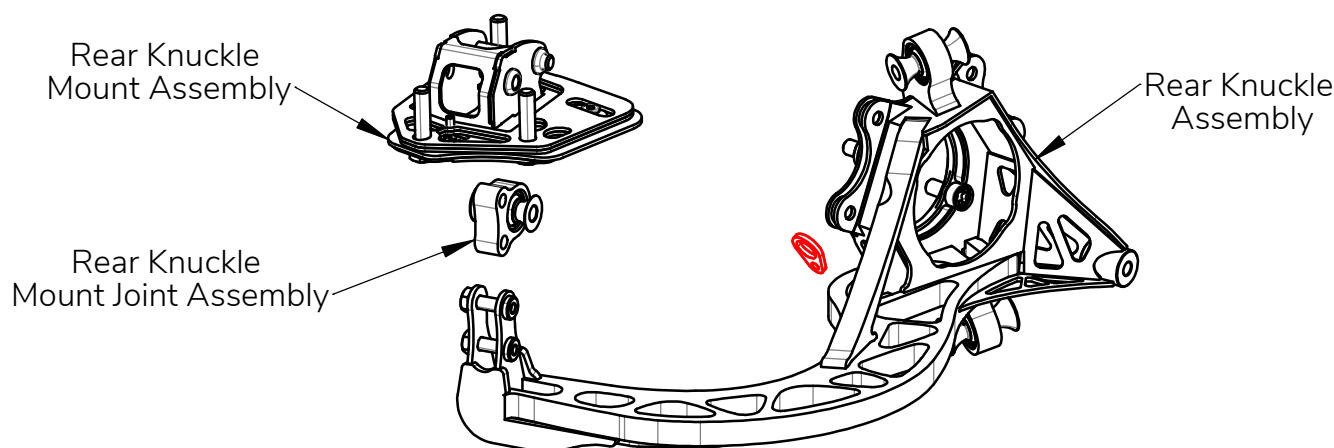


## Wisefab BMW E36/E46 Rear Knuckle installation guide.

This kit will fit E36 and E46 M and non-M models. Not suitable for E36 Compact.  
Right rear corner pictured here:



This kit fits all **E36/E46 brakes** other than E46 M3.

Stock brakes will fit the regular brake mount without modification. Due to differences in castings, the handbrake caliper might need modification. For handbrake use the same side caliper (RH on RH). When using opposite side stock caliper, the brake hose might not fit.

Minimum rim size is determined by the brake size as on the stock car.

For **wheel hub** use BMW part no **33411095774** from E36M; E46 330; E60 non-M or E63 non-M.

For **wheel bearing** use BMW part no **33411095238** from E63 non-M models or E65. Choose bearing kit with **M12 bolts**. Discard these bolts and use the T60 Torx-bolts supplied by WF.

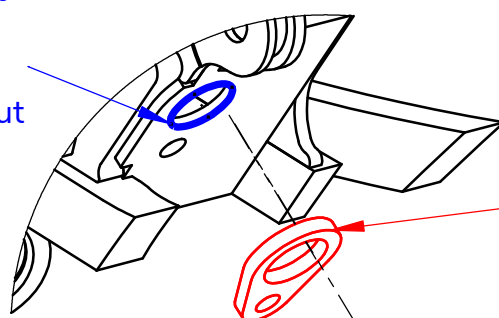
For **wheel speed sensor** use BMW part no **34526752702**.

We advise using WiseFab upper and lower control arms ([WF1361](#); [WF136](#)), halfshafts([WF3619](#)) and solid subframe bushings([WF246](#)). We also advise reinforcing the chassis with WiseFab chassis plates ([WF361\\_711A](#) for E36 ; [WF361\\_712A](#) for E46)

When fitting non-WiseFab halfshafts, make sure the CV joint clears the bearing bolts.

When using BMW shafts with 98mm ABS ring as found on E36 M3, E46 M3, E46 330 etc, use the supplied speed sensor spacer if ABS or wheel-speed reading is required.

With WiseFab halfshaft use the speed sensor without spacer.



When using BMW shafts with 98mm ABS ring, use the supplied spacer.

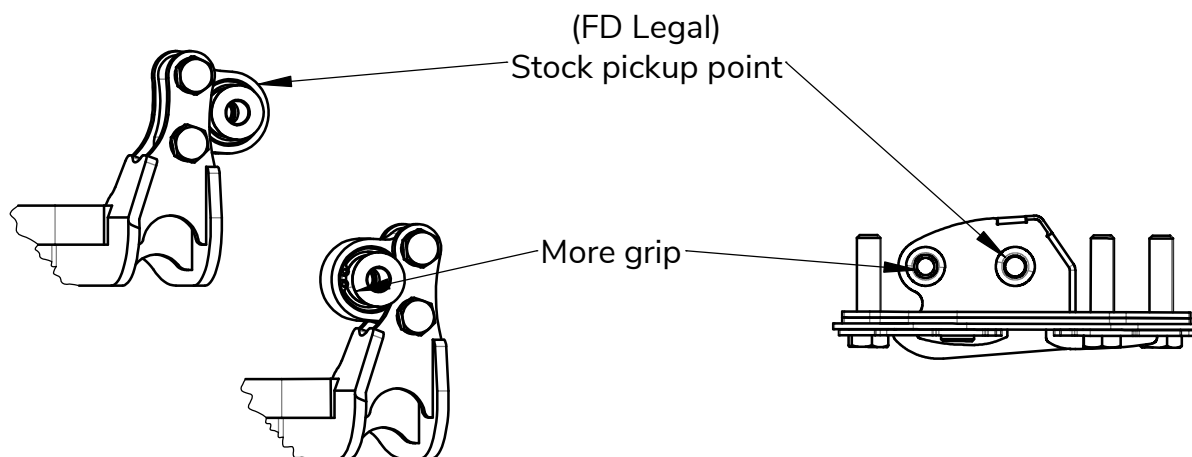


If you still have some trouble installing the kit, contact us at [sales@wisefab.com](mailto:sales@wisefab.com), or call us +372 5562 5669

## Adjustable rear grip.

The grip position is **not recommended for rally** because it limits maximum droop travel.

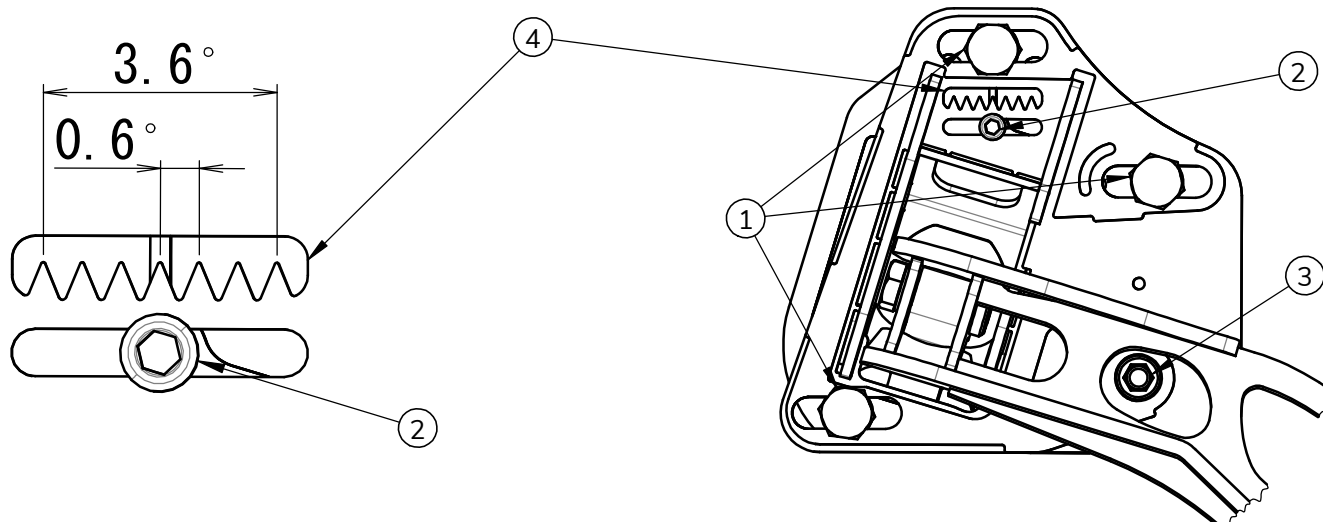
For drifting, this kit can be used with stock pickup point (FD legal) or with relocated pickup point (more grip, not FD legal). For that, the knuckle mount joint position has to be changed accordingly.



## Adjusting toe

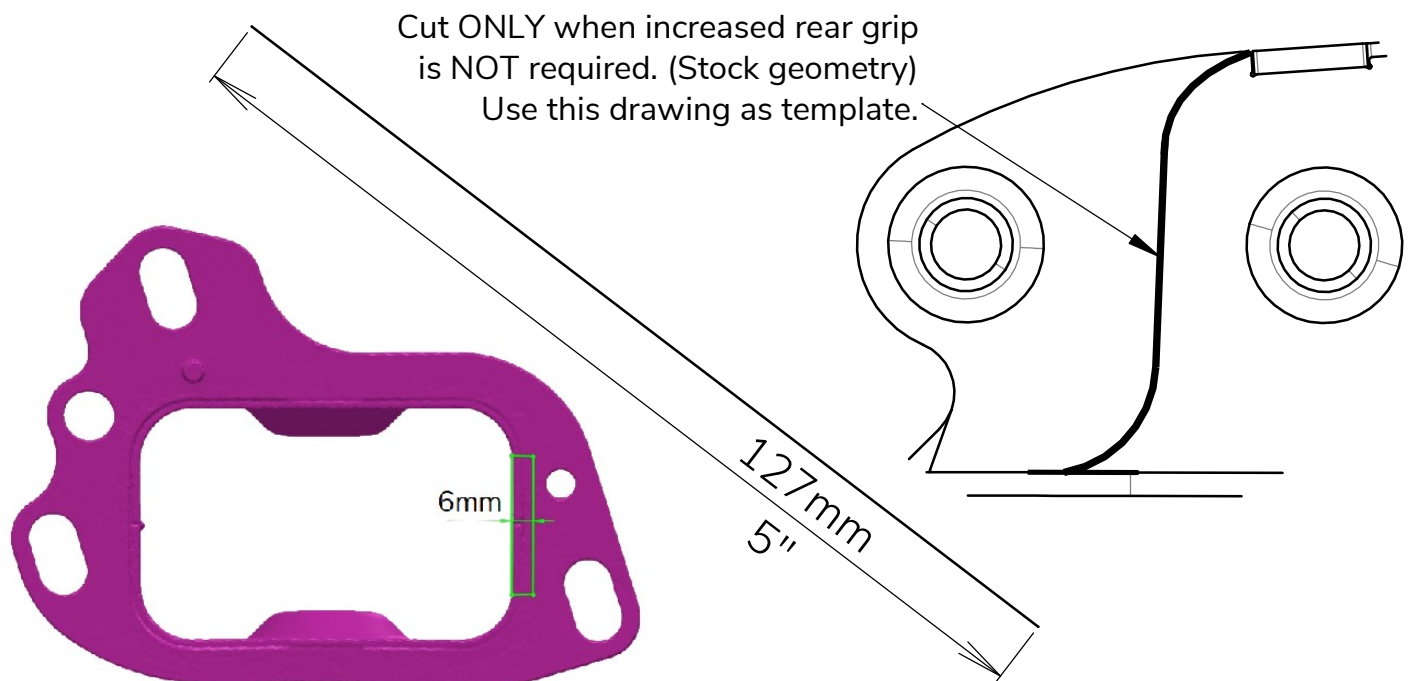
Toe can be adjusted accurately from the knuckle mount. To adjust, loosen three M12 bolts (1) and M6 allen bolt (2). Now turn the adjuster (3) with a 10mm Allen key.

Every tooth on the dial (4) equates to 0.6 degrees of toe per wheel. Use [WiseFab toe converter](#) to calculate the toe depending on wheel size.



When removing the knuckle for repairs, keep the M6 allen bolt (2) tightened to avoid changing the toe setting.

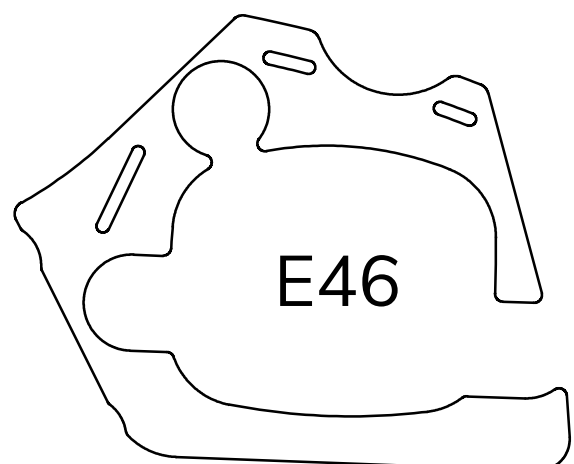
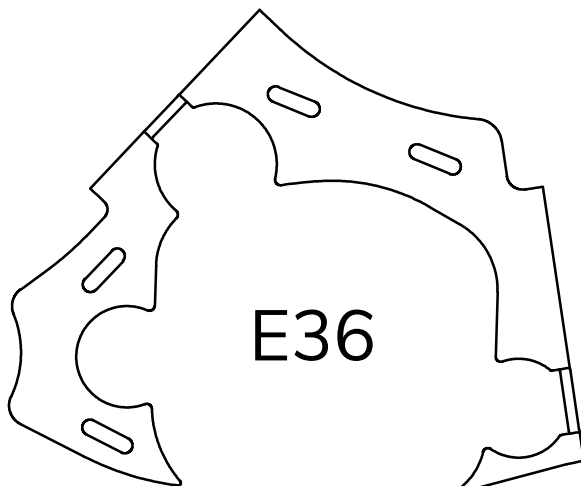
1. If you do not want to use the extra grip position, or maximum toe settings, you can cut that mounting tab off from the knuckle mount. In that case, no modifications will have to be made to the body.



2. If you want to use the stock knuckle mount with maximum bump travel (rally) it will need to be clearanced as shown in the picture above. Otherwise 420mm shock length is minimum.

3. For both E36 and E46 the pocket for the factory knuckle mount has to be cut out or otherwise modified. The simplest way is to cut it out.

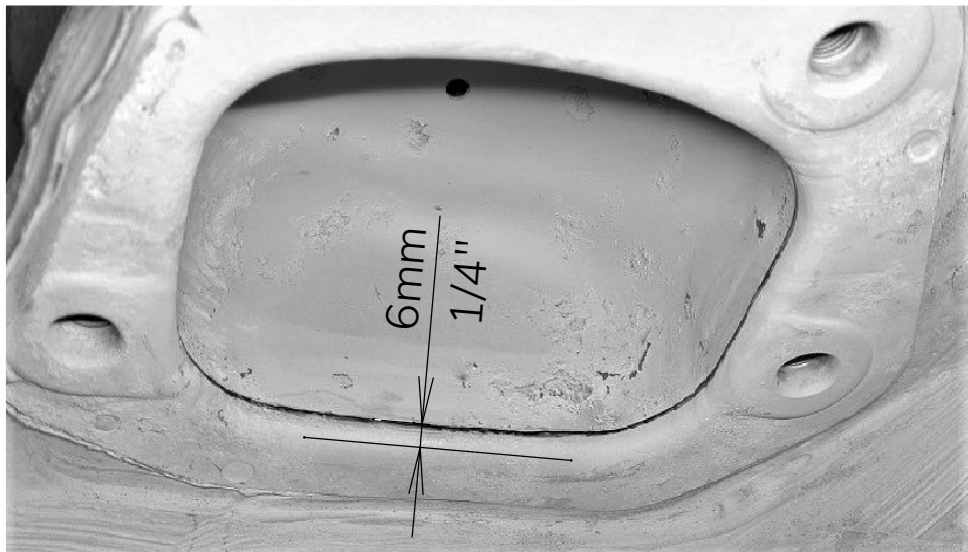
4. We strongly recommend reinforcing the chassis at the knuckle mount area. When using Wisefab Chassis Plates, weld the whole inside perimeter and all around the mounting bosses. Also weld through the slots and around the outside perimeter.





## Modifications to body.

5. Mark the cutting line inside the bowl . Retain 6mm or 1/4" of the edge.



6. Cut along the line and remove the bowl. For ease of removal, cut the bowl in two.

7. Install knuckle mount and check for fitment.

8. If necessary, chamfer the edge on the rearmost thread as shown in the picture. The factory bolts may also require shortening.



9. For maximum toe-out on E36 body, the inner sill panel needs to be cut or stretched at the area shown in the picture.

