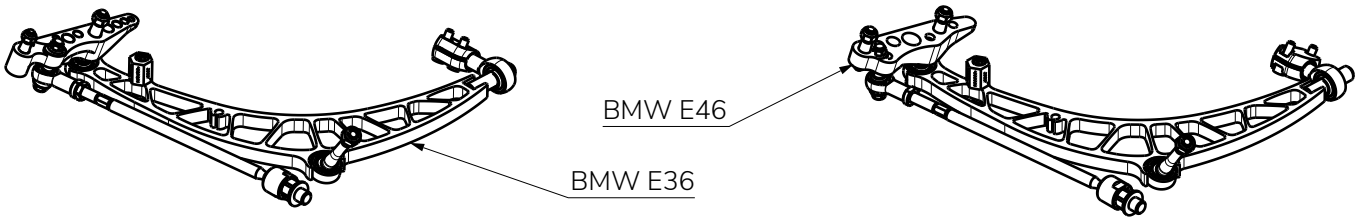


BMW E36/E46 Narrow Front lock kit

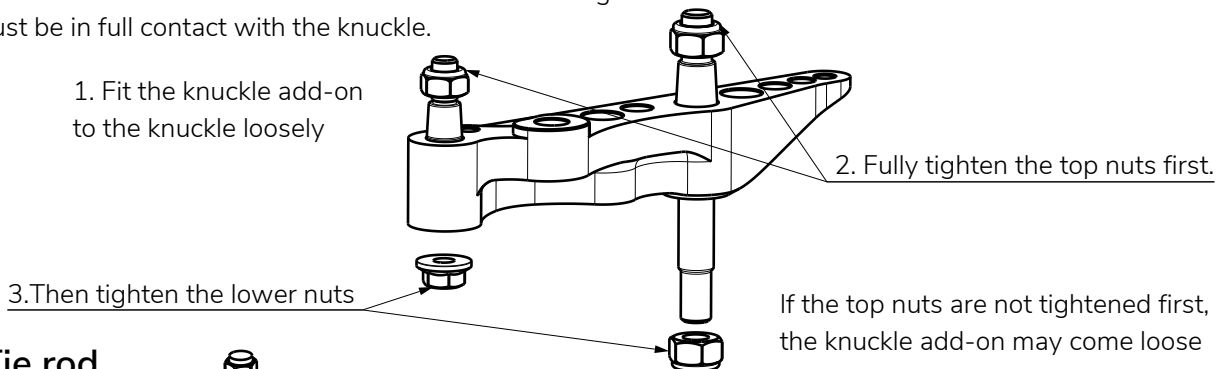
Overview of the kit



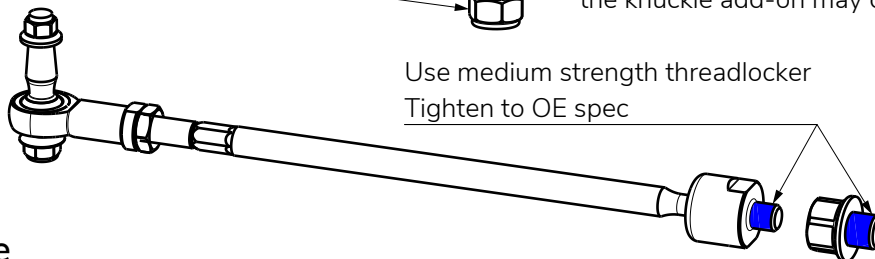
Inner tie rod is supplied with the kit. There is **no** Camber plate included

Knuckle add-on

Make sure that the knuckle and knuckle add-on mating surfaces are clean and flat. The knuckle add-on surface must be in full contact with the knuckle.



Tie rod



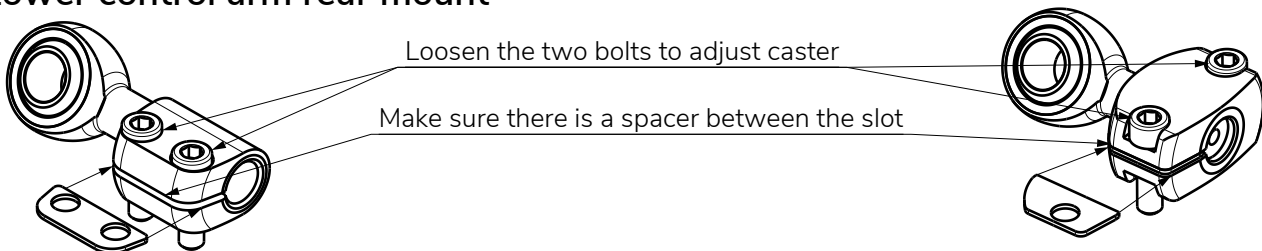
Camber plate

Use OE top mount or if coilovers are used then the camber plate supplied by it. This kit does not include camber plates.

Lower control arm

Install the Wisefab lower control arm in the same fashion as the OE one. Use small amounts of medium strength thread locker on all of the lower control arm fasteners.

Lower control arm rear mount



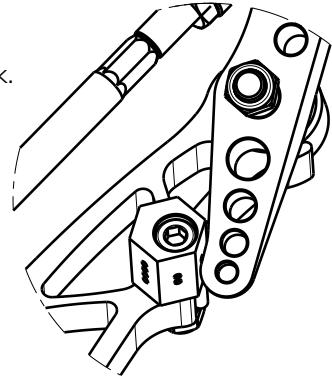
If you still have some trouble installing the kit, contact us at sales@wisefab.com, or call us +372 5562 5669

Lock stopper adjustment

BMW E36 and E46 Wisefab kit are equipped with hexagonal lock stoppers, where each side has a different offset. The more dimples, the less steering lock. When installing make sure that tie rod is not binding in any way.

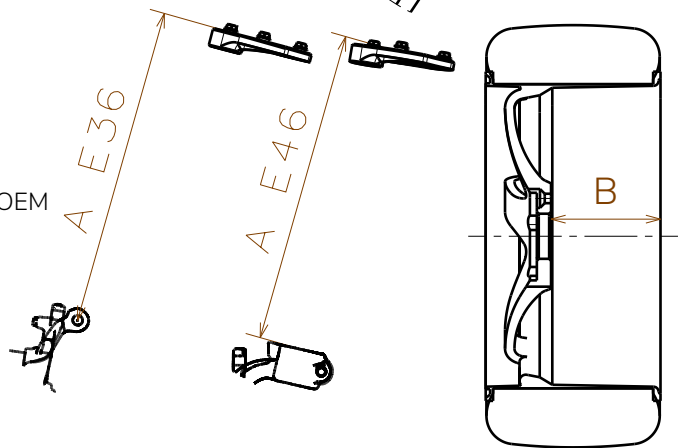
IMPORTANT!

If the lock stopper is set check the clearance between car body, suspension components and the wheel with tire in all extent of the suspension travel. If there is clearance issues then limit the steering lock more or change your wheel allignment. After the first shake down check that all the nuts and bolts are tight



Recommended alignment specs

- Camber: E36 -6°; E46 -4°
 - Caster: E36 5.5°; E46 6°
 - Toe: toe out 2 mm
 - Front track: E36 65 mm; E46 35 mm wider per side then OEM
 - Strut lenght (A) max: E36 500 mm; E46 510 mm
min: E36 340 mm; E46 310 mm
 - Wheel backspace (B) max 19": 145 mm
18": 145 mm
17": 140 mm
- Most 15" wheels will not fit



If you still have some trouble installing the kit, contact us at sales@wisefab.com, or call us +372 5562 5669