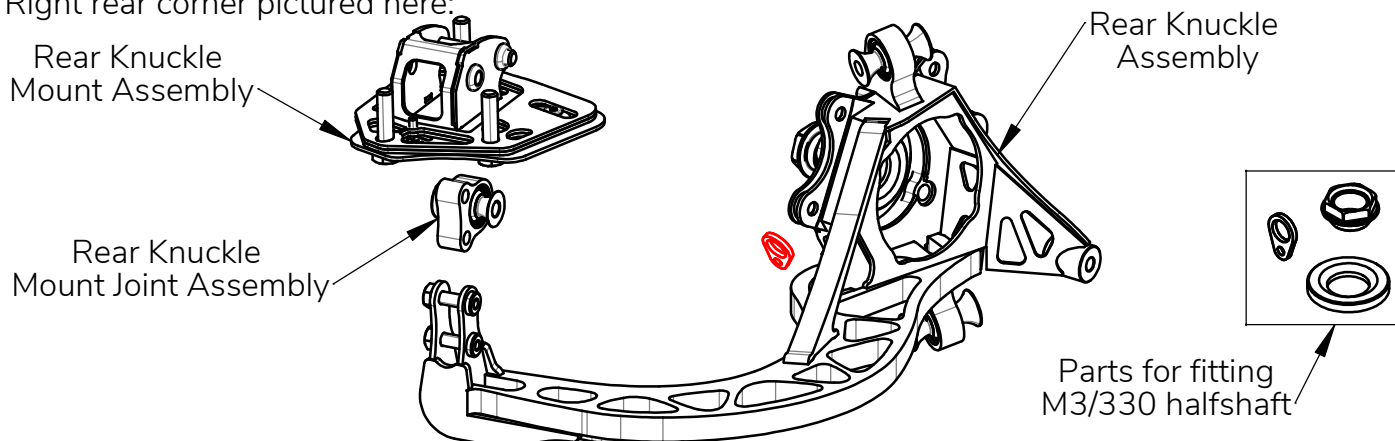


## Wisefab BMW E36/E46 Rear Knuckle installation guide.

This kit will fit E36 and E46 M and non-M models. Not suitable for E36 Compact.

Right rear corner pictured here:



This kit assumes **E46 330 brakes** with **320x22mm** disc. E46 M3 brakes **will not fit** without modification. All other factory E36/E46 disc brakes will fit in the stock location but might need modification to the handbrake caliper to clear the knuckle.

Minimum rim size is 16" when using E46 330 brakes.

Required 330 **caliper** part no L/R **34216765883 / 34216765884**; carrier **34216765885**, disc **34216864052**. For **wheel hub** use BMW part no **33411095774** from E36M; E46 330; E60 non-M or E63 non-M. For **wheel bearing** use BMW part no **33411095238** from E63 non-M models or E65. Choose bearing kit that is supplied with **M12 Torx-head** bolts. Remove washers from the bearing bolts. For **ABS sensor** use BMW part no **34526752702**.

We advise using Wisefab upper and lower control arms (**WF1361**;**WF136**), halfshafts(**WF3619**) and solid subframe bushings(**WF246**).

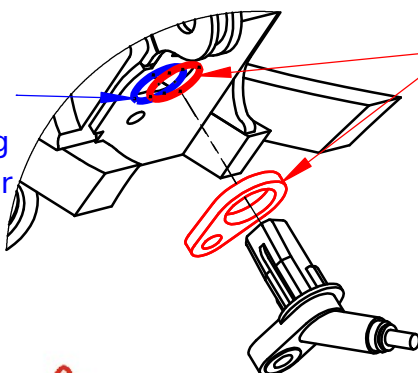
When fitting non-Wisefab halfshafts, make sure the CV joint clears the bearing bolts. E38/E39/E60 type CV joints generally clear the bolts.

When using BMW shafts with 98mm ABS ring as found on E36 M3, E46 M3, E46 330 etc, use the supplied spacer and custom nut to clear the bolts. Make sure the halfshaft has enough compressed length, as this spacer will shorten the halfshaft by 8mm.



**Remove washers from these bolts!**

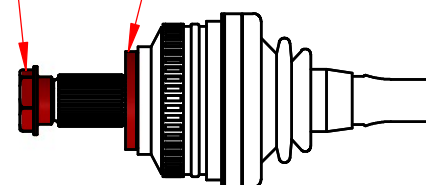
With Wisefab halfshaft use the outer ABS mounting without spacer



When using BMW shafts with 98mm ABS ring, use the inner ABS mounting with the supplied spacer.

Nut (torque to factory spec)

Spacer (press fit)



**Do not use these parts with Wisefab halfshafts!**

**FOR RACING USE ONLY**

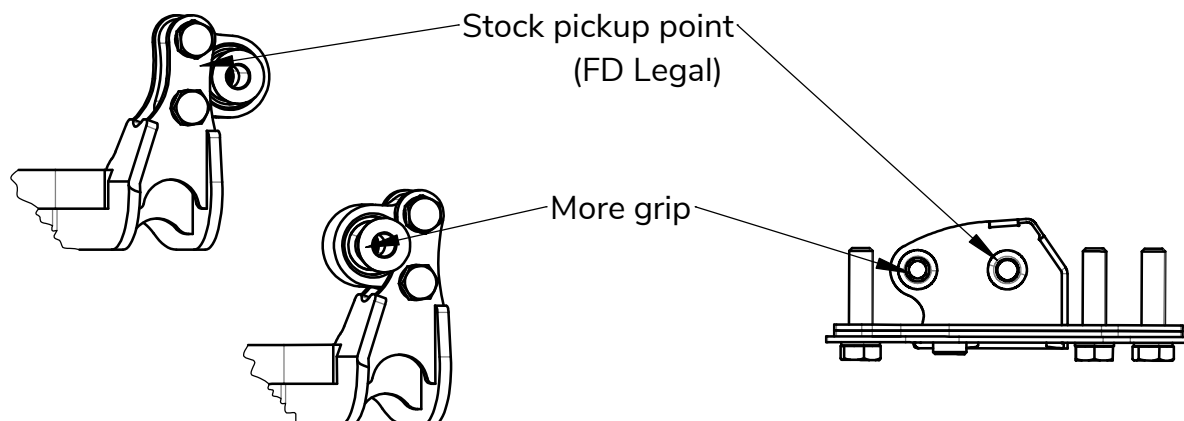


If you still have some trouble installing the kit, contact us at

**sales@wisefab.com**, or call us **+372 5562 5669**

## Adjustable rear grip.

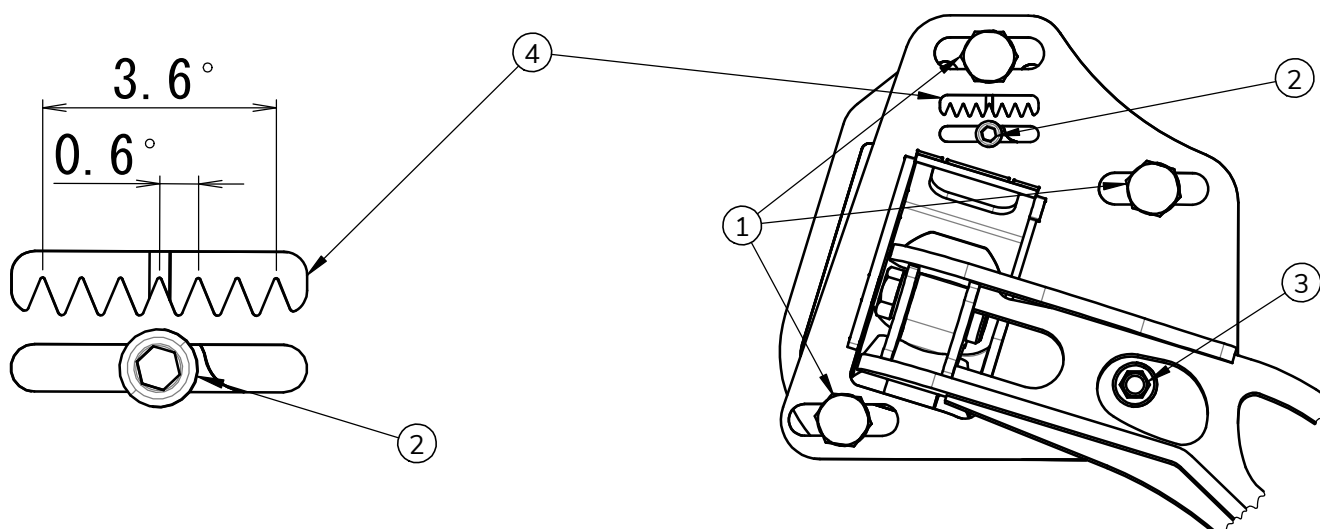
This kit can be used with stock pickup point (FD legal) or with relocated pickup point (more grip, not FD legal). For that, the knuckle mount joint position has to be changed accordingly.



## Adjusting toe

Toe can be adjusted accurately from the knuckle mount. To adjust, loosen three M12 bolts (1) and M6 allen bolt (2). Now turn the adjuster (3) with a 10mm Allen key.

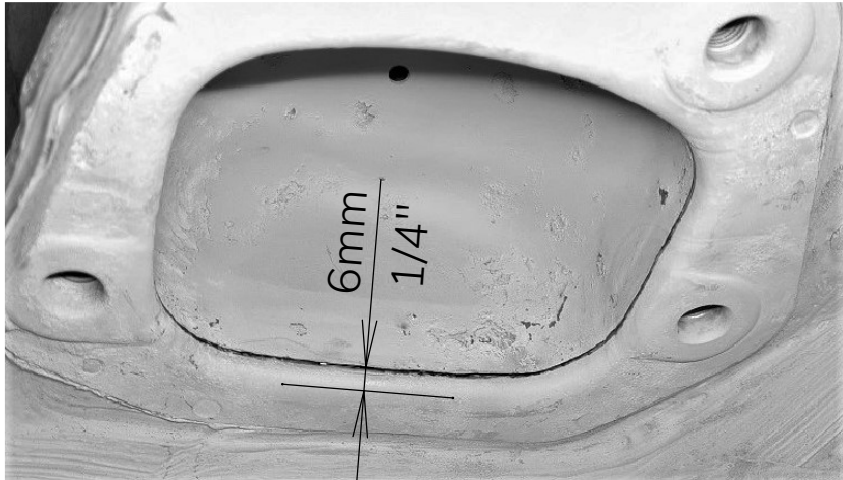
Every tooth on the dial (4) equates to 0.6 degrees of toe per wheel. Use [WiseFab toe converter](#) to calculate the toe depending on wheel size.



When removing the knuckle for repairs, keep the M6 allen bolt (2) tightened to avoid changing the toe setting.

## Modifications to body.

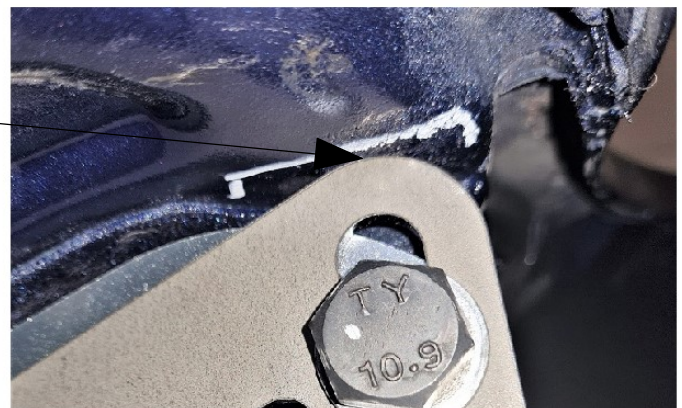
1. For both E36 and E46 the pocket for the factory knuckle mount has to be cut out or otherwise modified. The simplest way is to cut it out.
2. Mark the cutting line inside the bowl . Retain 6mm or 1/4" of the edge.



3. Cut along the line and remove the bowl. For ease of removal, cut the bowl in two.
4. Install knuckle mount and check for fitment.
5. If necessary, chamfer the edge on the rearmost thread as shown in the picture. The factory bolts may also require shortening.

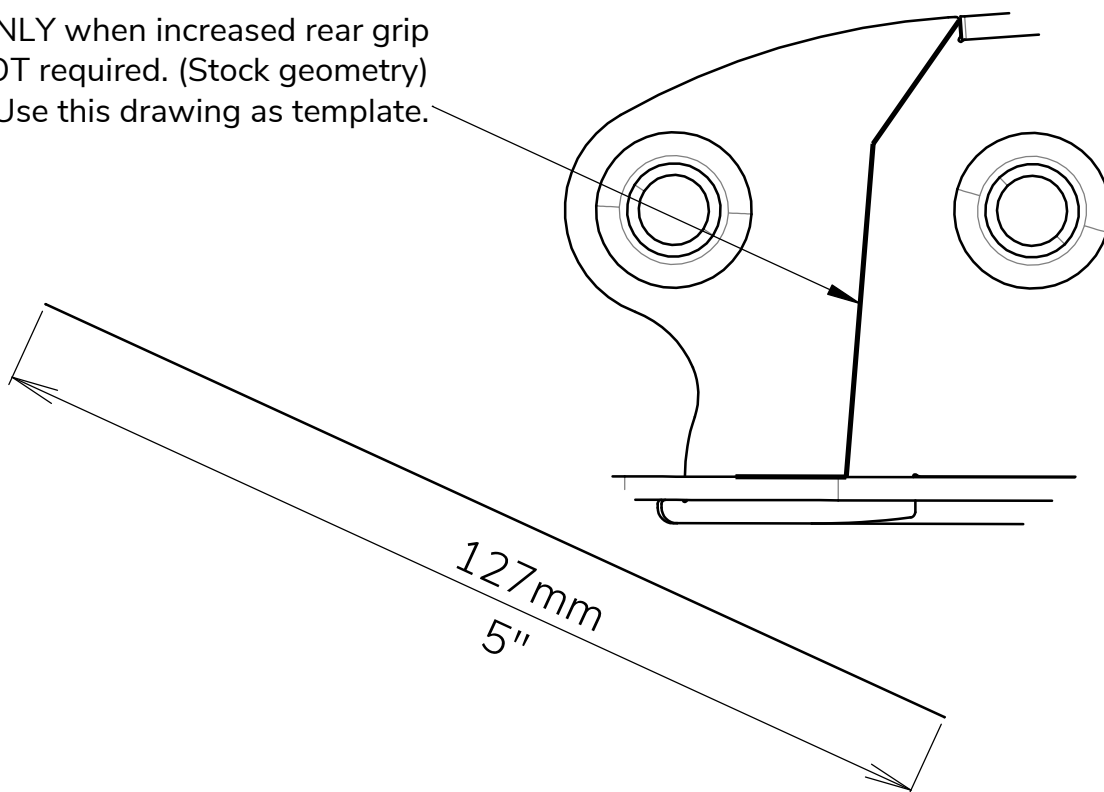


6. For maximum toe-out on E36 body, the inner sill panel needs to be cut or stretched at the area shown in the picture.



7. If you do not want to use the extra grip position, or maximum toe settings, you can cut that mounting tab off from the knuckle mount. In that case, no modifications will have to be made to the body.

Cut ONLY when increased rear grip  
is NOT required. (Stock geometry)  
Use this drawing as template.



**FOR RACING  
USE ONLY**



If you still have some trouble installing the kit, contact us at  
**sales@wisefab.com**, or call us **+372 5562 5669**