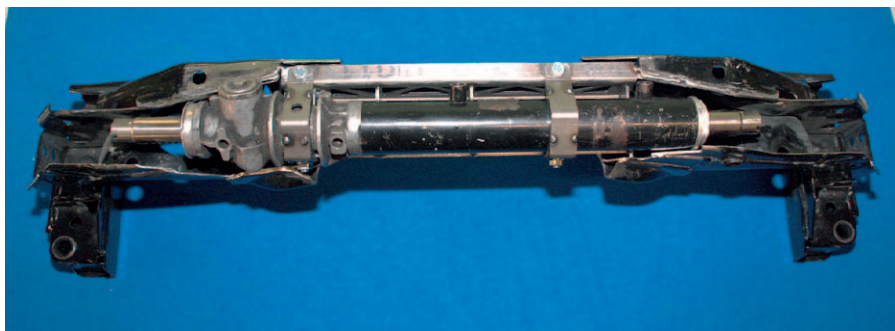




## ***Toyota GT86 subframe modification for Nissan S13/S14 steering rack***

### **MODIFICATIONS MANUAL**



**FOR RACING  
USE ONLY**

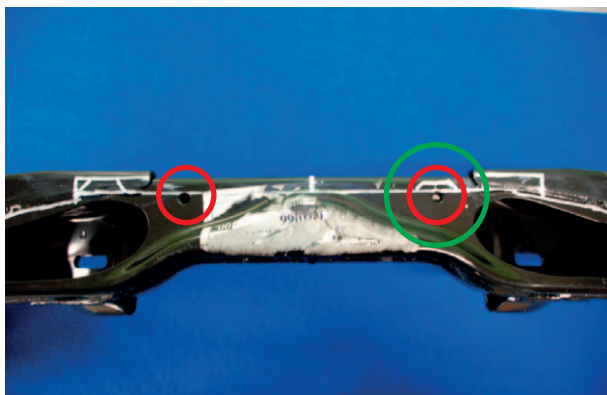


**NOTE!** Mark the center of the subframe according to the center of the oval slot. Carry the marking to different sides of the member.

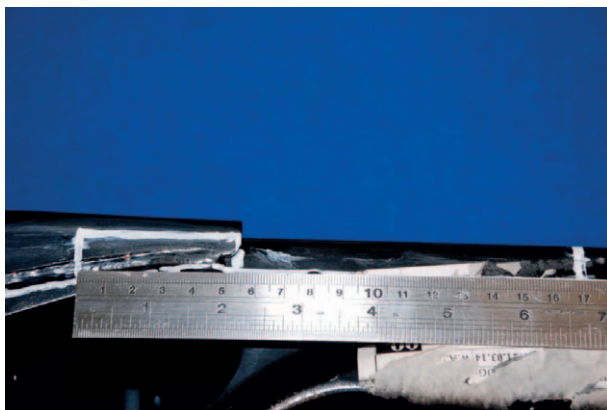


### 1. Mark the cutting line

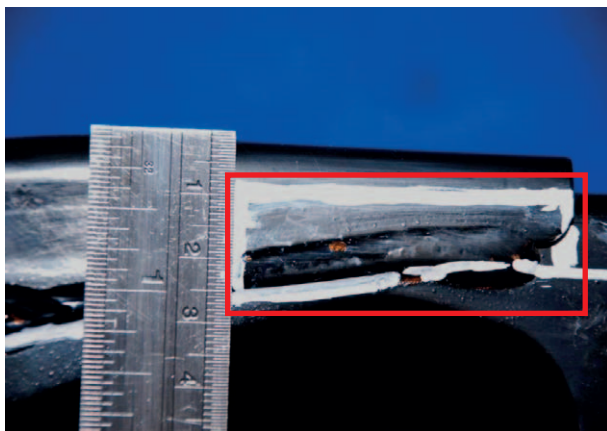
Connect the outer edges of the two holes extending the line 170 mm from the center of the member. Green circle shows the approximate cutout needed for the rack fasteners nut clearance.



It may be cut out later according to the insert exact nut location. Draw the lines according to the pictures



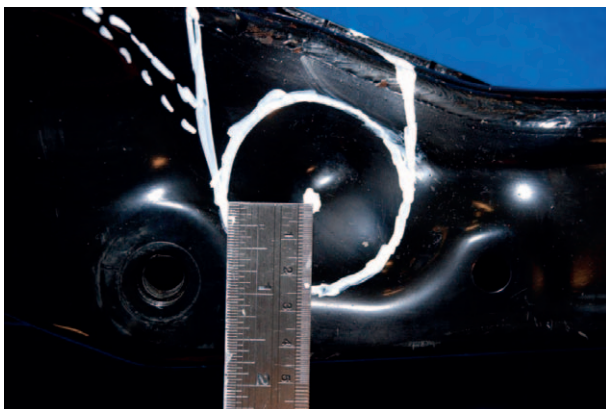
Red rectangular should be symmetrical on both sides of the center line.



Round cutouts give the clearance for the steering rack and oil tubes.

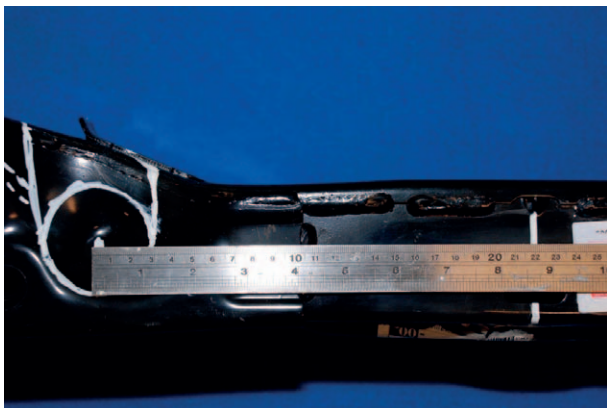


45 mm from the edge of the subframe.

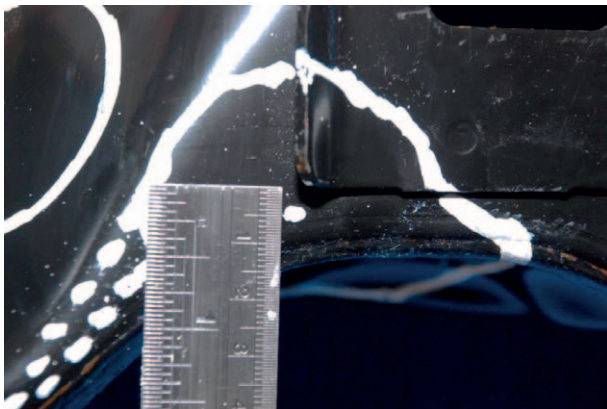




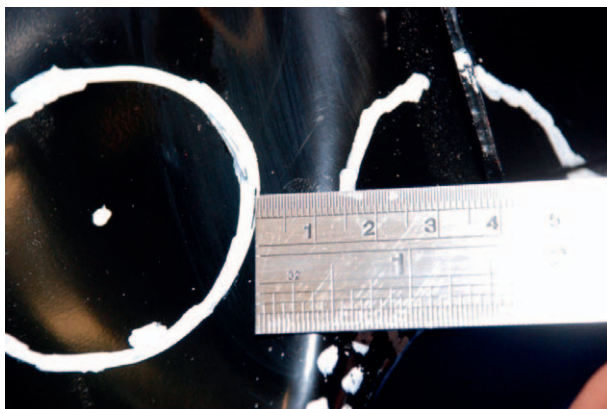
220 mm from the center axis.



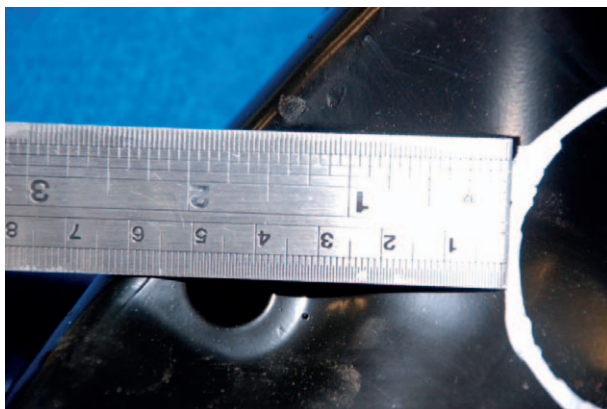
5mm from the edge of the engine mount bracket.



15mm distance  
between.



About 37 mm from the  
slot edge.





## 2. Cut the profile

After marking everything the correct way, here's how the subframe should look like. Proceed with for example hole cutter and angle grinder and make the necessary cutouts.





Remove the threaded tubes used for fixing the original steering rack.

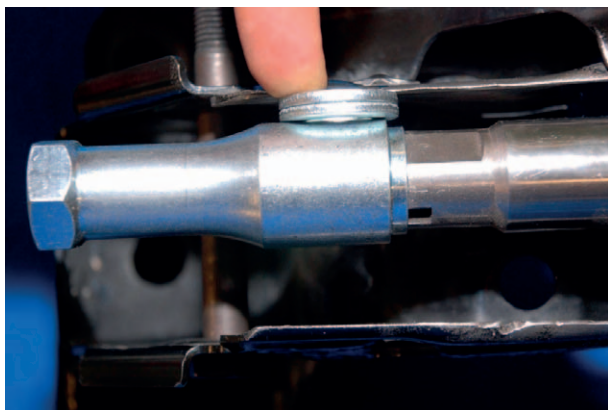


Remove the “inner wall”.



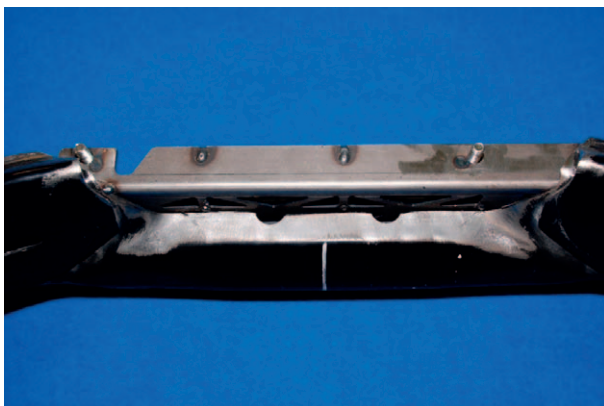
### 3. Insert positioning

Place the rack to the insert and fix the clamps. Position the rack with the insert to the subframe and locate for welding. We recommend using spacers with the correct thickness to locate the steering rack and insert. Position the spacer between subframe inner wall and steering rack extender correct spacer thickness is 6mm. Use same thickness spacers for both ends of the subframe.



Use spacer to position the steering rack vertically. Position the spacer between 12 mm A-arm polt and steering rack extender cylindrical section. Correct spacer thickness is 23mm.



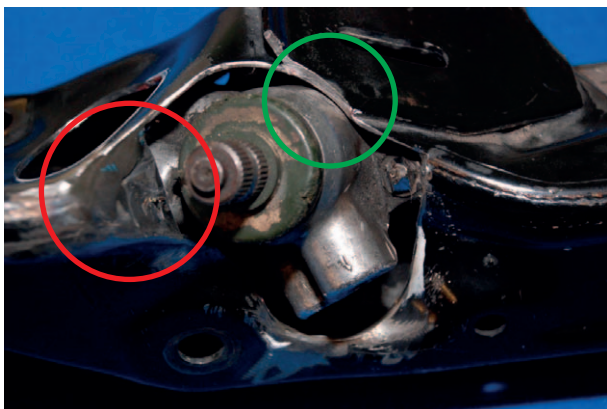




Using cutting, bending and welding make enough clearance for the steering column extender and its fixing bolt (shown with the red circle on the picture right).

Remove the rib from the steering rack for better fit (location shown with the green circle on the picture right).

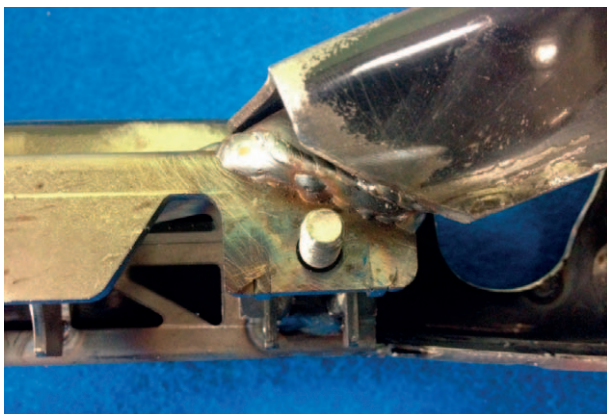
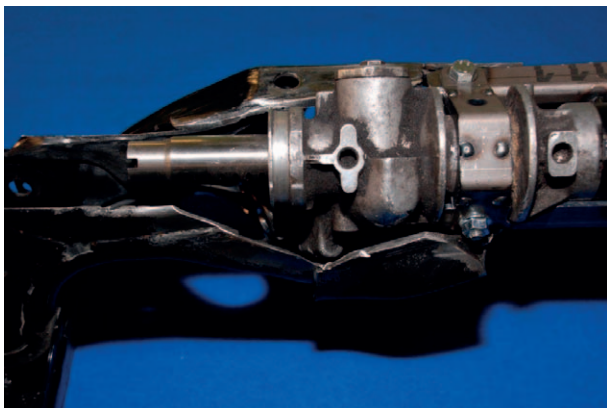
Remove any old paint and dirt around the cutting lines for better weldability.

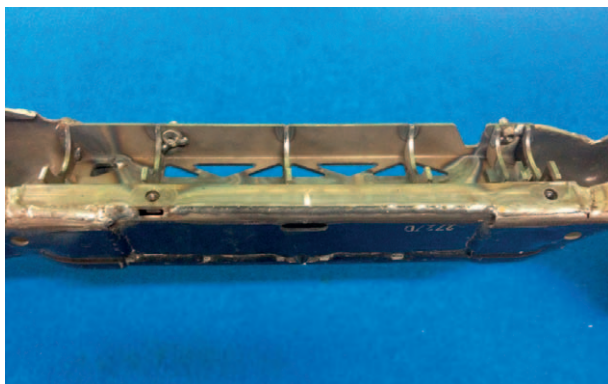
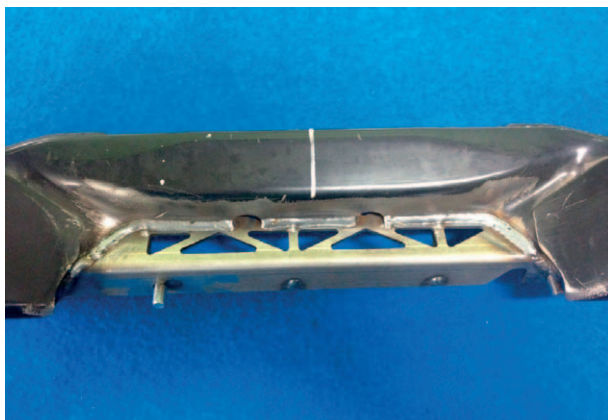




Weld the steering rack fastener

**NOTE!** Leave enough clearance for the steering rack bracket.







**FOR RACING  
USE ONLY**



**Thank you for purchasing  
our product!**

**Happy drifting!**

Wisefab team

