

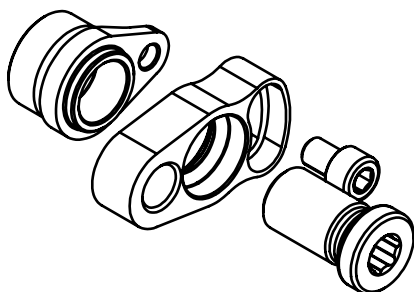
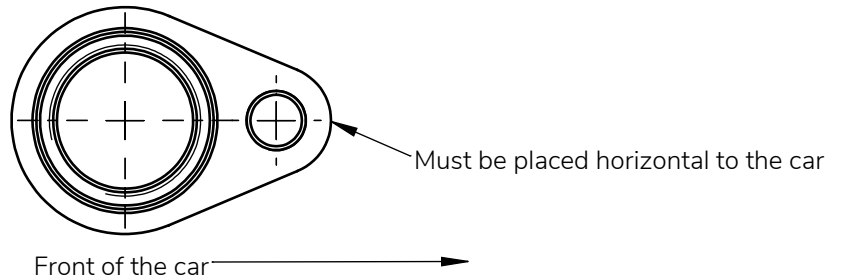
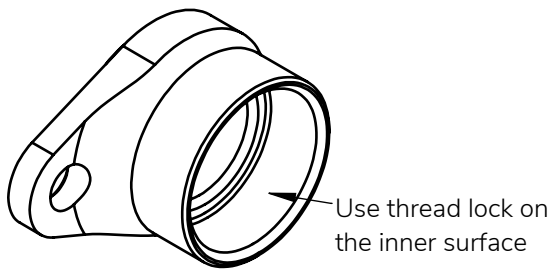
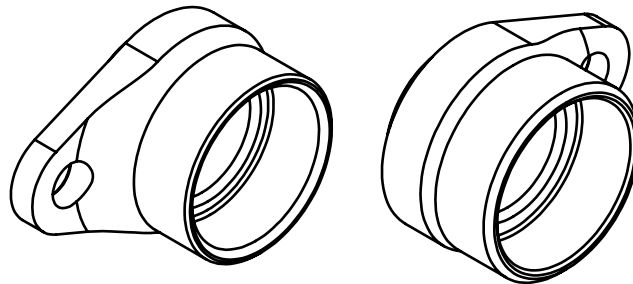
# Chevrolet Corvette C6 Steering rack offset kit

On the driver's side the steering rack housing must be modified to make room for the rack offset. For that 20 mm must be cut off the end of the housing. It is recommended to fully cut off the 20 mm part, but if that is not acceptable then top and bottom part of the housing can be left uncut. For that use the rack offset itself to mark the area of the cut.



## Installing the rack offset

Left and right steering rack ends have different inner diameter



1. Finger tight everything to the steering rack end
2. Tighten the small M8 allen head bolt
3. Make sure that the rack offset is parallel to the car
4. Force the rack offset onto the steering rack end by tightening the large allen head bolt
5. Tighten to 130Nm

## Adjusting bump steer

Bump steer can now be adjusted by loosening the large center bolt and the small allen head bolt. If both bolts are loose turn the rack offset bigger part to raise or lower the tie rod pick up point. After the adjustment tighten the small bolt first and then the center bolt



If you still have some trouble installing the kit, contact us at [sales@wisefab.com](mailto:sales@wisefab.com), or call us +372 5562 5669