

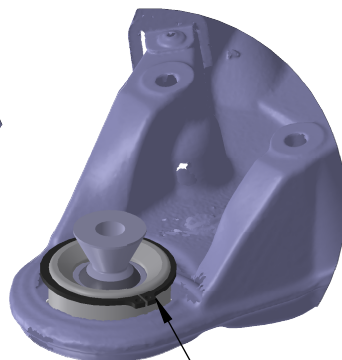
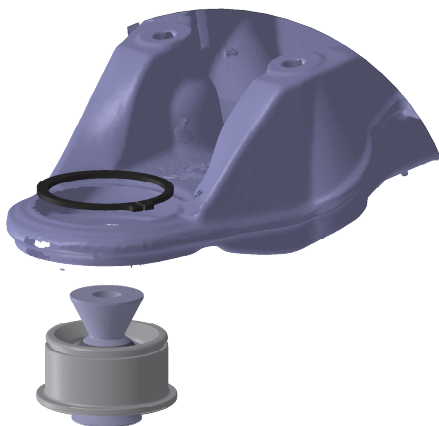
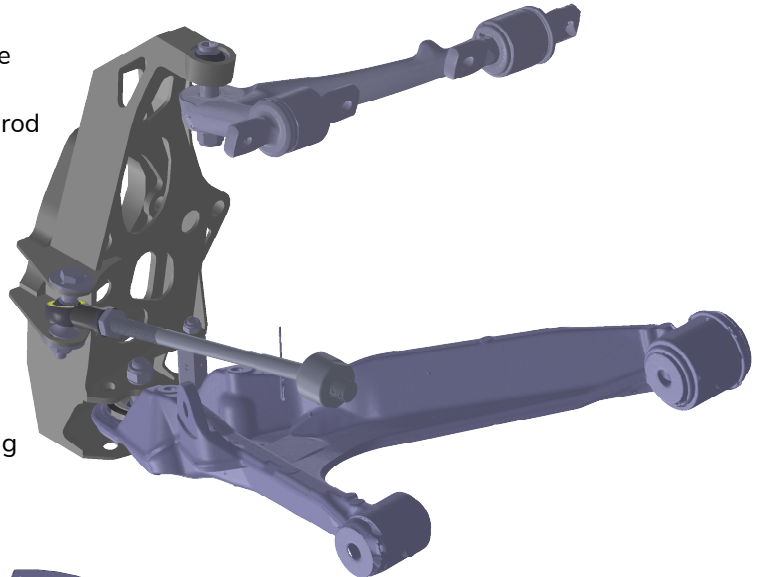
Chevrolet Corvette C5/C6 OEM Arms front lock kit

Overall view of assembled components in the right corner

Bolts and nuts may needed to loosen to make your assembling easier. OEM anti-roll bar may need to be modified to fit and can't be used with high wheel angles. OEM Tie rod can't be used, Corvette C4 Tie rod 21011026 is needed

Installing the Lower Arm Mounting

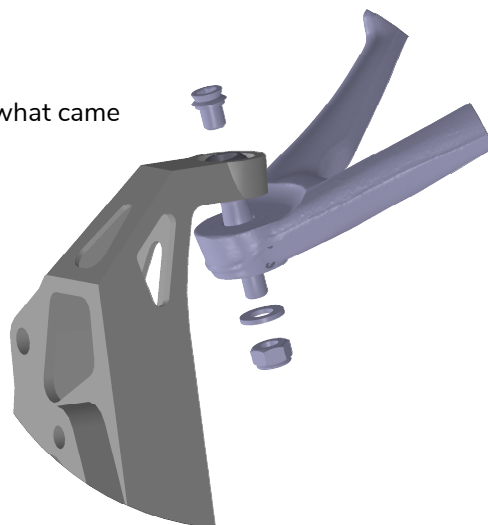
Remove OEM ball joint and install the Wisefab Lower arm mounting using a press. External locking ring must remain up.



External locking ring must be located upside

Installing the Knuckle

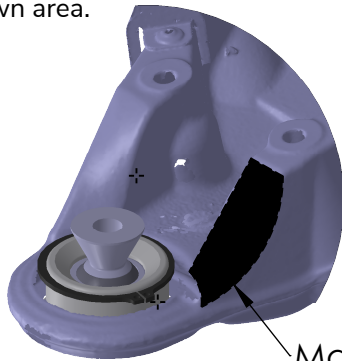
Connect brake caliper using OEM bolts.
Connect hub with OEM bolts, but use 3x M12 washers what came with knuckles.
Install the knuckle to upper Arm mounting as shown.



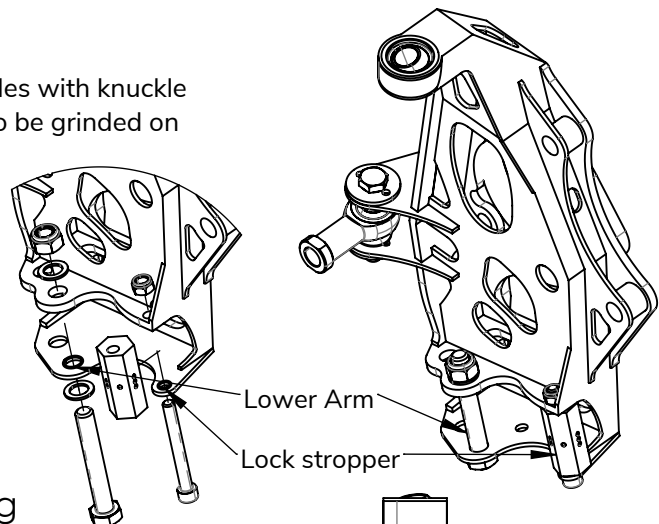
Installing the Knuckle

Mount the Lower Arm where shown

Place a lock stopper as shown. Check if something collides with knuckle on different angles and heights. Lower arm may need to be grinded on shown area.



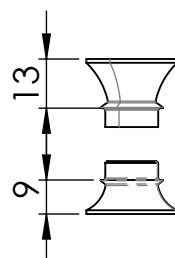
May need grinding



Lock stopper adjustment

Wisefab lock kits are equipped with hexagonal lock stoppers, where each side has a different offset. The more dimples, the more offset and by that less usable lock.

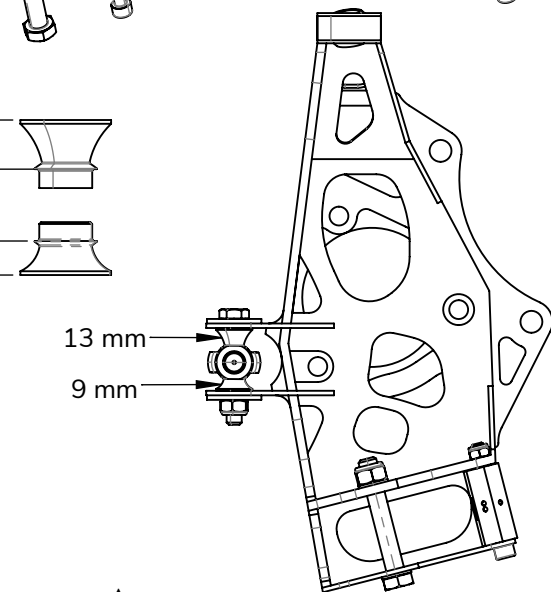
When installing, make sure that Tie rod is not binding in any way.



13 mm
9 mm

Installing the Tie rod

OEM Tie rod can't be used, you need Corvette C4 Tie rod
Connect the tie rod with the rod end fitted to the knuckle.
Upper spacer must be 13 mm high and lower spacer 9 mm



Recommended Alignment Specs

Camber: -4.8°

Caster: 7°

Toe: if ackerman is 0 or negative then toe is 2mm
if ackerman is positive then toe is 0

Wheel Backspacing (A) max: " 17" wheel - 160 mm

18" wheel - 160 mm

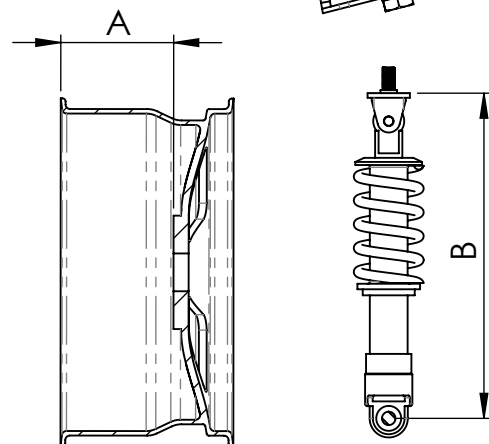
19" wheel - 160 mm

Some 17" wheels may not fit

Coilover: length (B): Rideheight 350 mm

Maximum: 430 mm

Minimum 315 mm



Important information

After installment check for clearance issues between car body and other suspension components. Make sure that nothing is fouling throughout all of suspension travel with suitable wheel. For that the Coilover has to be removed. In case of interferences make corrections in alignment or limit useable lock.