

## Nissan 370Z subframe modification.

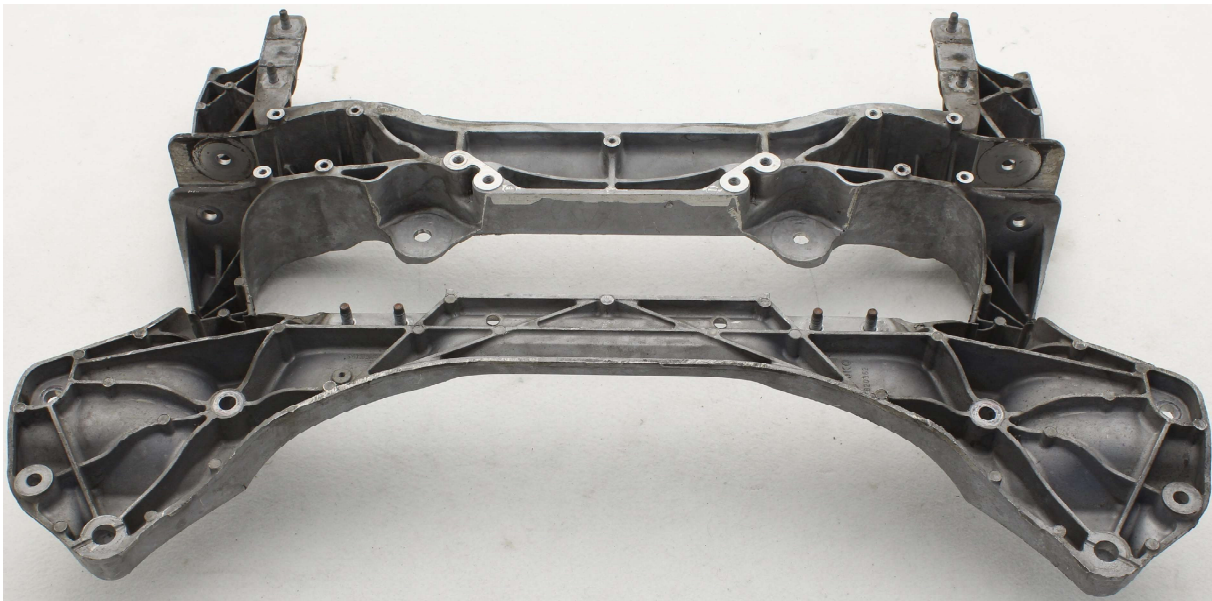
This manual describes the process of modifying the Nissan 370Z (2008-2020) front subframe. With this modification steering rack is moved forward. This setup can only be used with WISEFAB 370Z Front kit. Stock engine mounts can be used with modified subframe, but engine moves upwards 3 mm. Power steering solenoid valve can not be used. Solenoid delete fitting is included with the kit. All stock bolts and nuts are needed. Subframe modifications are same for the RHD and LHD steering rack. Pictures on this manual are taken with left-hand drive rack.

1. Make sure that You have the all required tools on hand. You will need:

- Safety equipment (Goggles, gloves)
- Marker, masking tape, scissors
- Wrenches
- Die grinder. Angle grinder with cutting and sanding discs
- Ratchet strap

2. Print and cut the paper templates out. Templates are at the end of the manual. NB! Templates and parts may appear different from the real ones. In case you printed out the manual yourself, then there is scale check line 127 mm or 5" long. If the templates are not in scale, then check your printer settings and reprint it until actual measurement is 127 mm. Dotted line on template is for positioning, bold solid line for marking the cutting line.

3. Clean the subframe form dirt/oil.

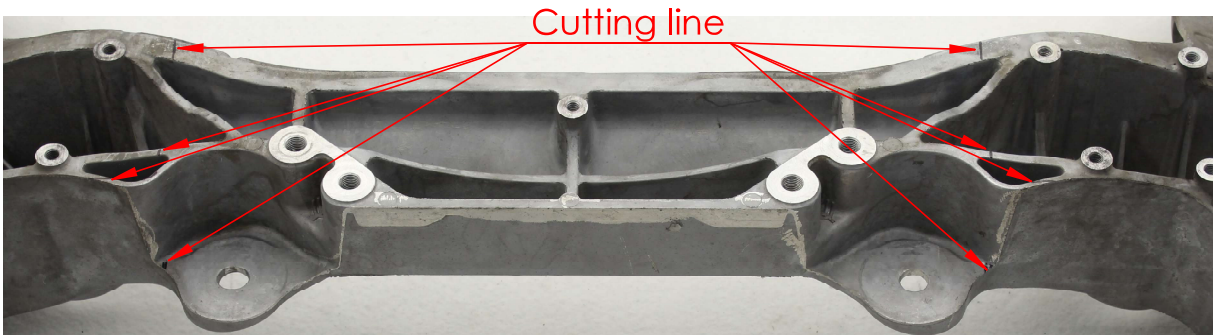
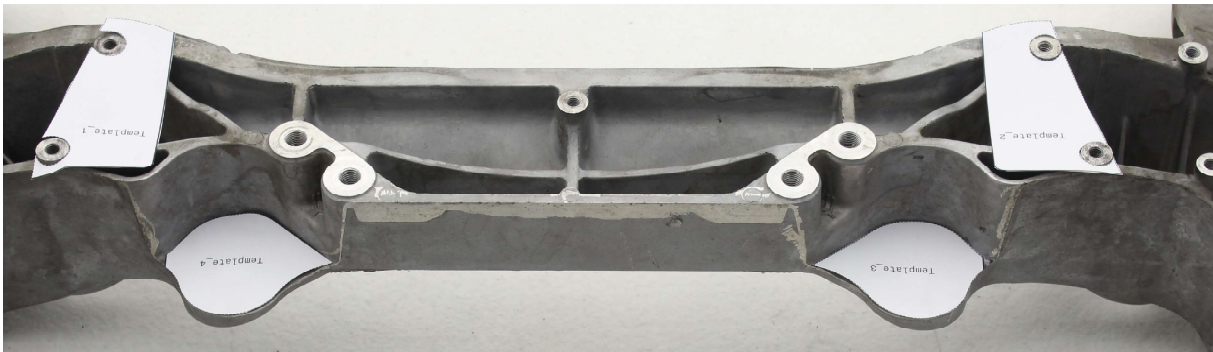
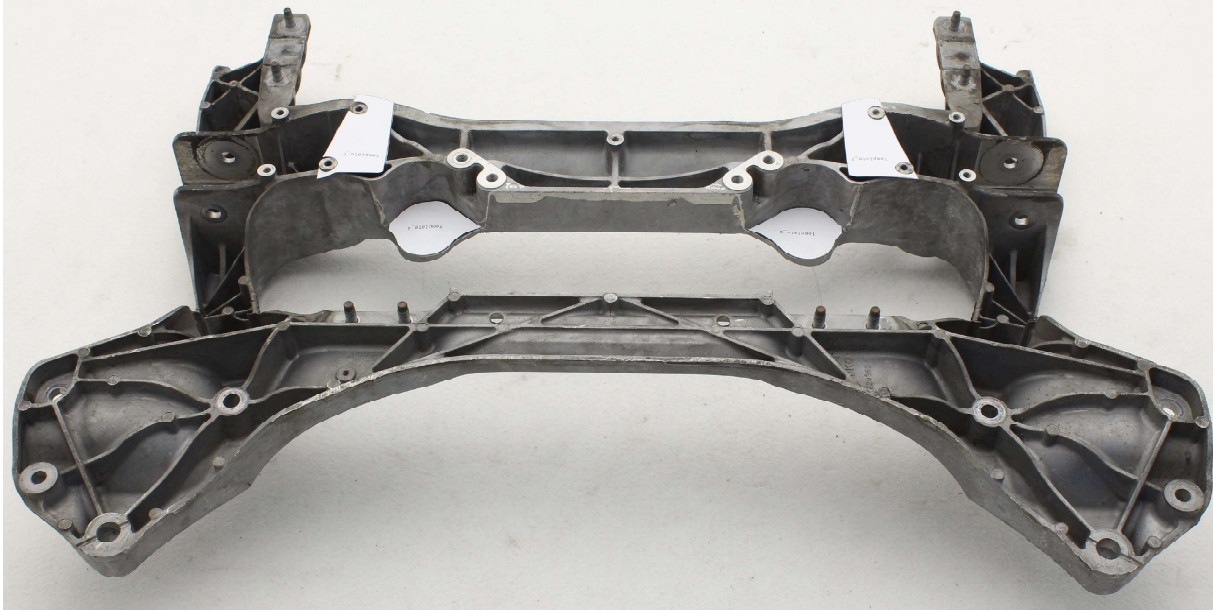


**FOR RACING  
USE ONLY**

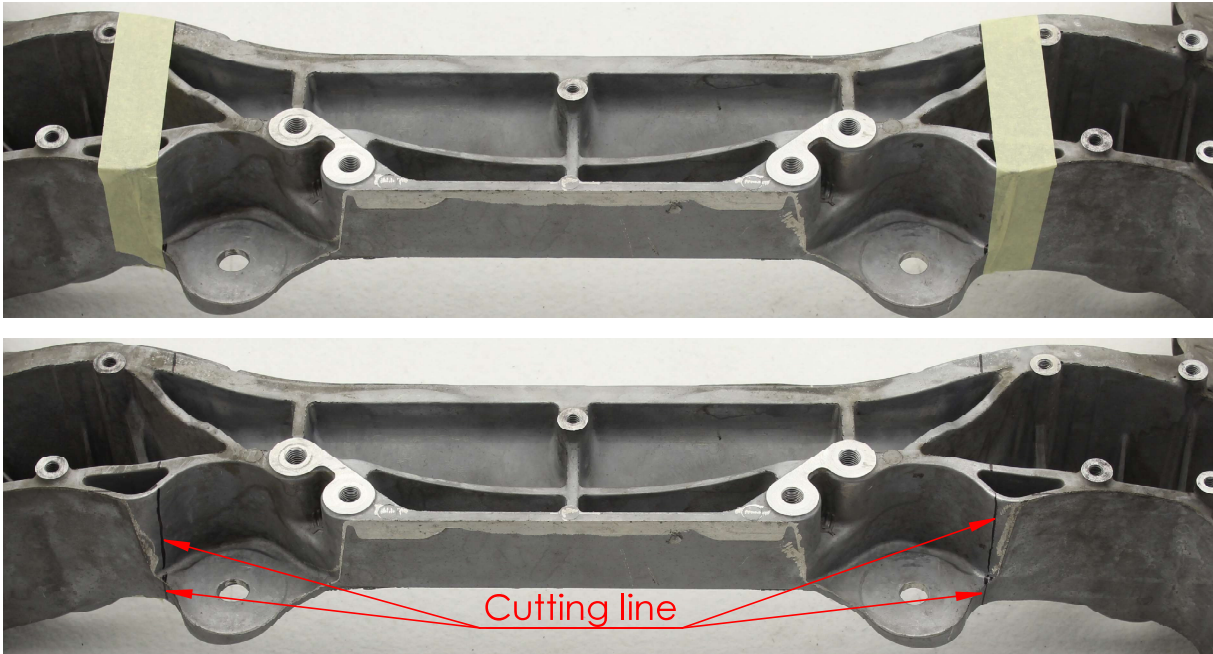


If you still have some trouble installing the kit, contact us at  
**sales@wisefab.com**, or call us **+372 5562 5669**

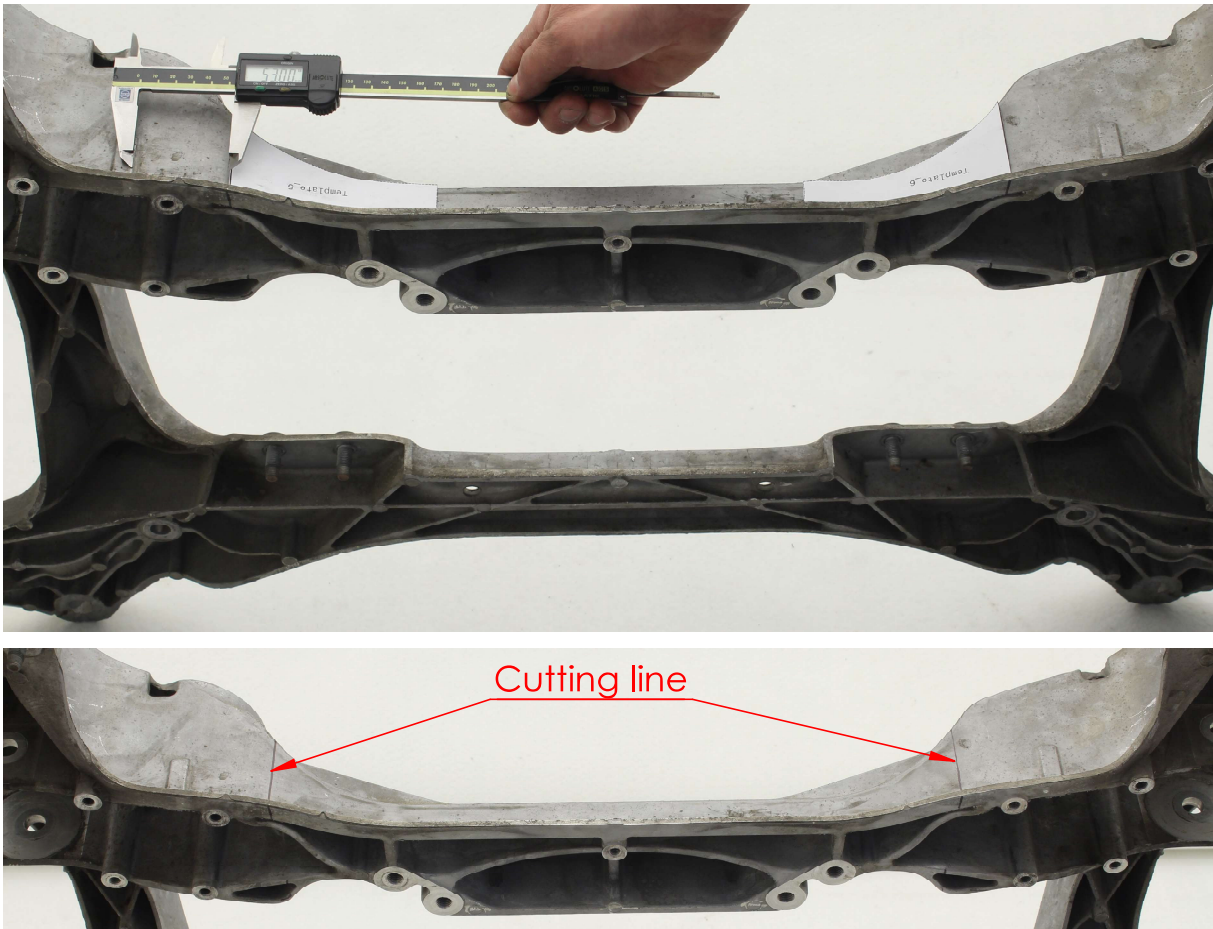
5. Position the Template\_1, Template\_2, Template\_3 and Template\_4 as shown in the pictures. Holes in the templates have to match with the holes in the subframe. Templates edges must fit with subframe edges. Double sided tape is useful for placement. Mark the cutting lines.



6. Connect marked lines with masking tape and mark the line.



7. Position the Template\_5 and Template\_6 as shown in the pictures. Templates edges must fit with subframe edges. Double sided tape is useful for placement. Templates edge must match with marked lines. Templates edges is about 53 mm from the bump shown on the pictures. Mark the cutting lines.



**FOR RACING  
USE ONLY**

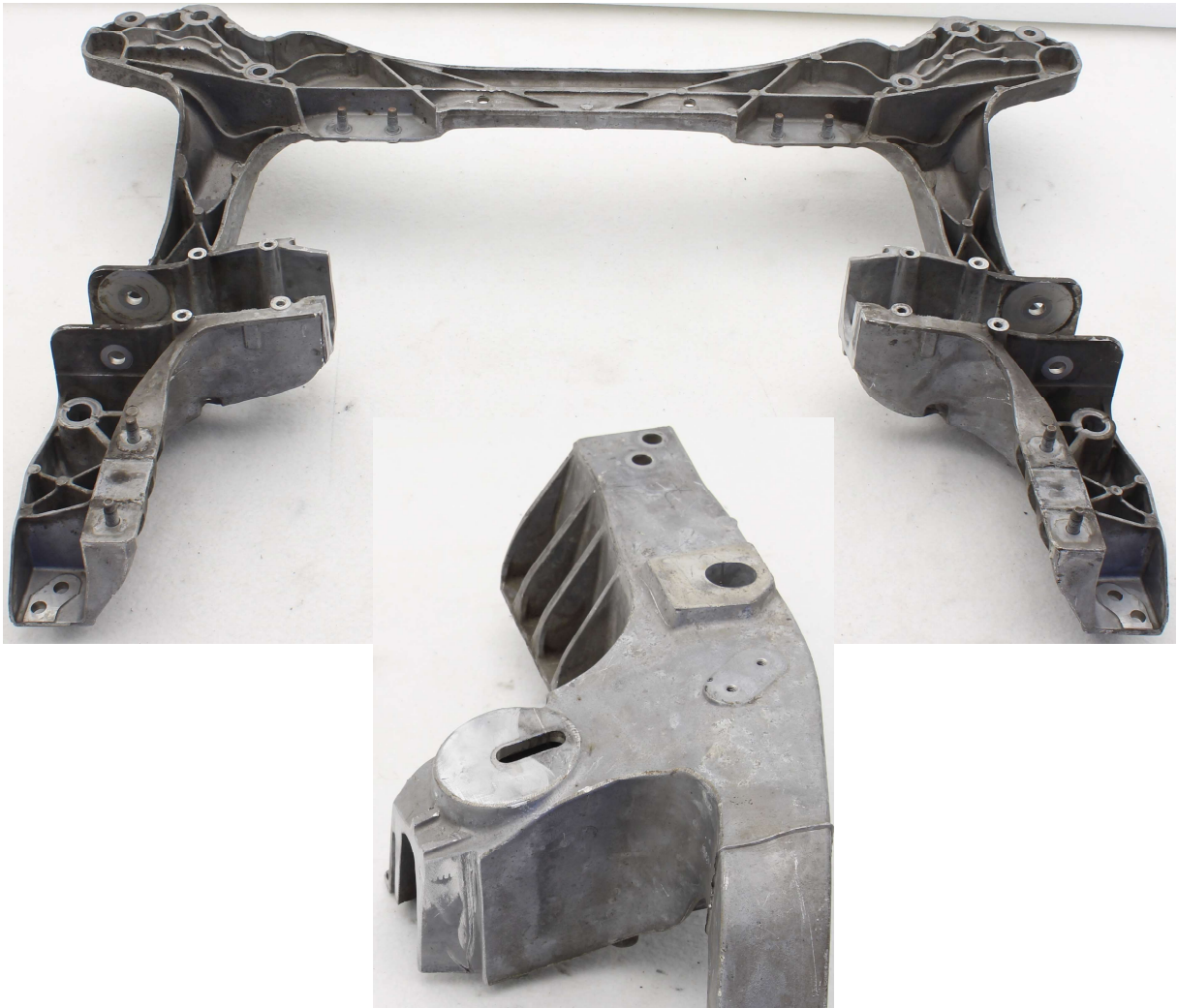


If you still have some trouble installing the kit, contact us at  
[sales@wisefab.com](mailto:sales@wisefab.com), or call us +372 5562 5669

8. Check if marked line endings are at the same line



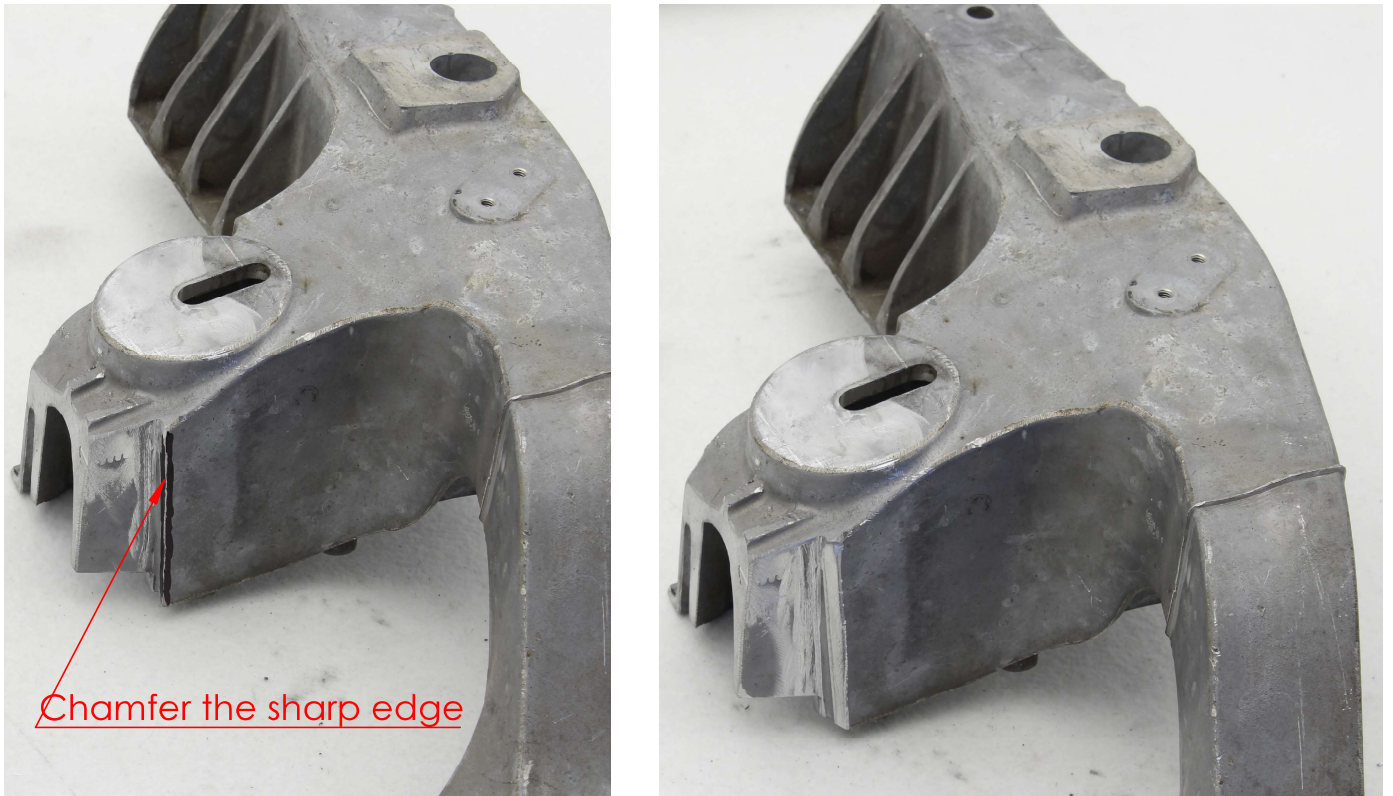
9. Cut off the area between the marked lines



10. Mark the area about 10 mm from bottom and cut it off. Same for the other side.

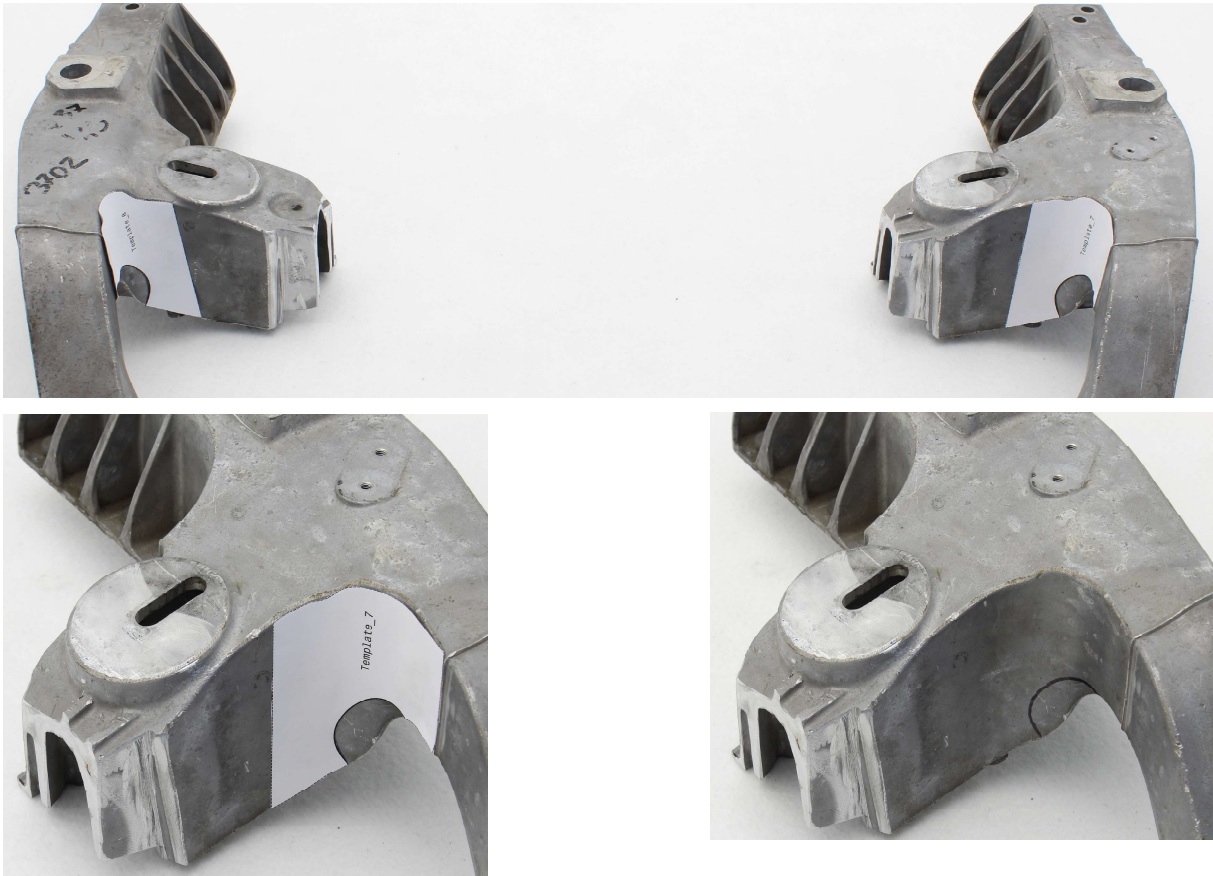


11. Chamfer the sharp edge, same for the other side.



If you still have some trouble installing the kit, contact us at [sales@wisefab.com](mailto:sales@wisefab.com), or call us +372 5562 5669

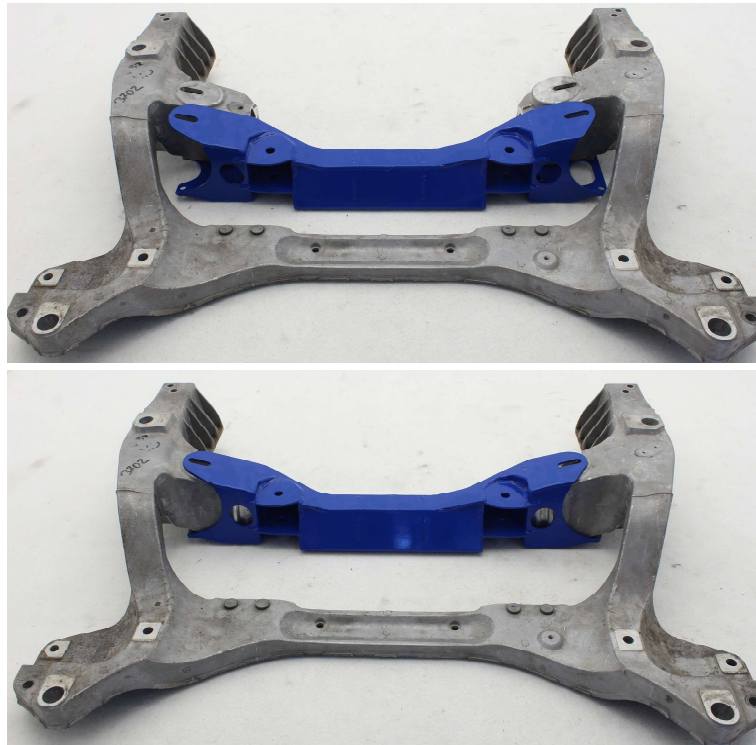
12. Position the Template\_7 and Template\_8 as shown in the pictures. Templates edges must fit with subframe edges. Double sided tape is useful for placement. Mark the cutting lines.



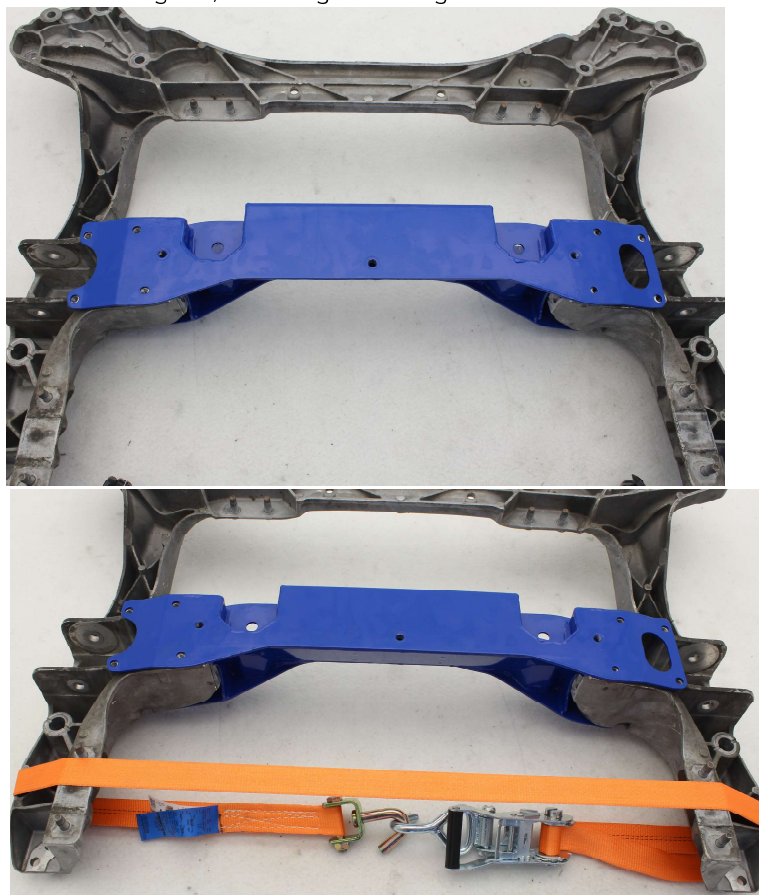
13. Cut off the marked areas



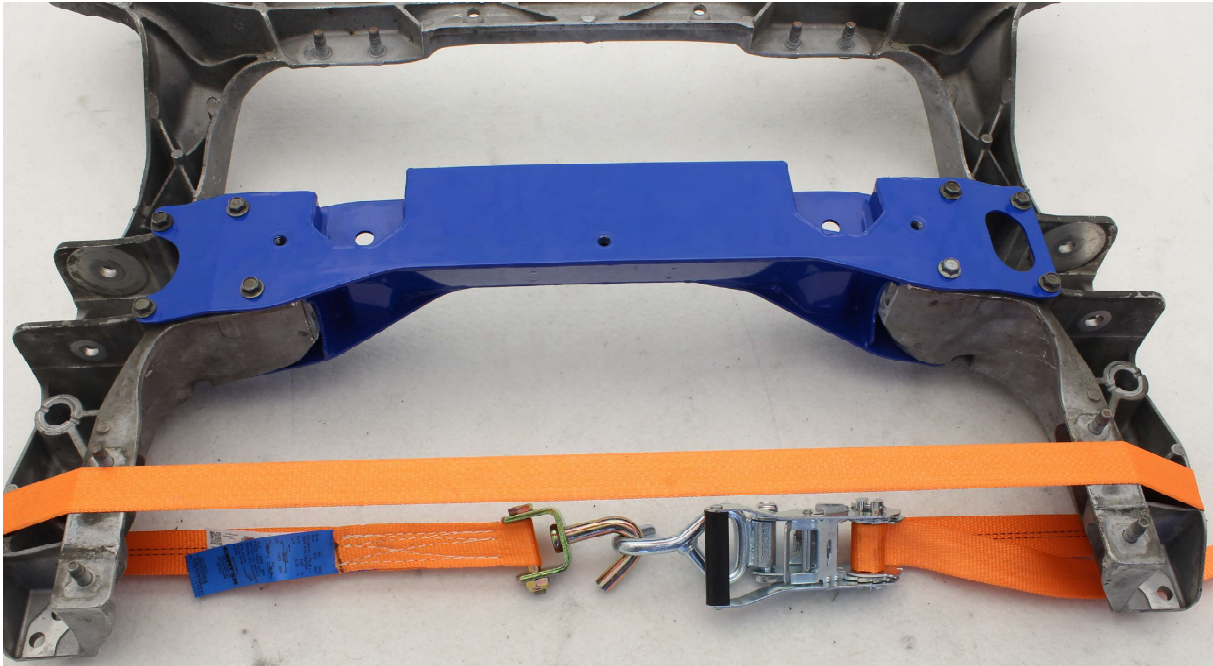
14. Insert the rack relocation insert.



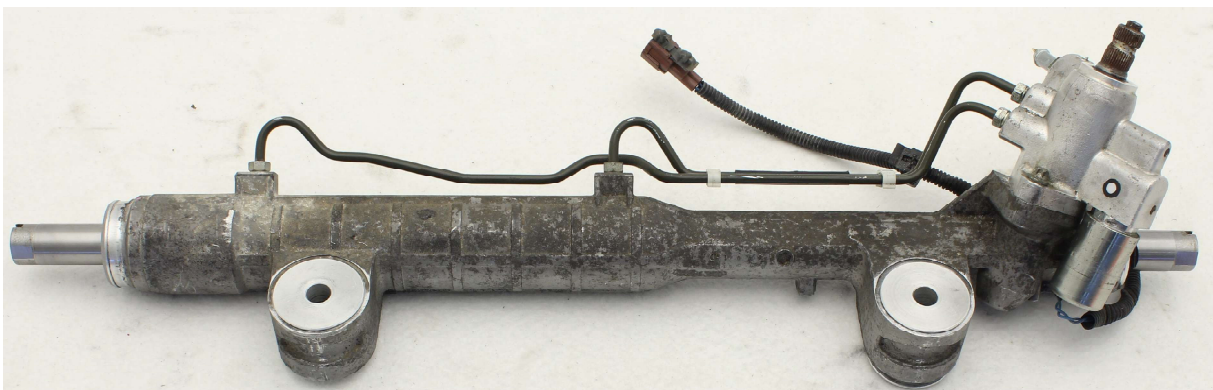
15. Check if it is possible to insert the bolts. If not, use a ratchet strap to align the holes. Make sure everything fits well and there is no interference between the subframe and the steering rack relocation. If the steering rack relocation insert touches the subframe and the holes are still not aligned, use the grinder to grind off the excess material from the subframe.



16. Insert stock bolts, but do not tighten, remove the ratchet strap. Bolts must be tightened when front subframe is mounted on car.

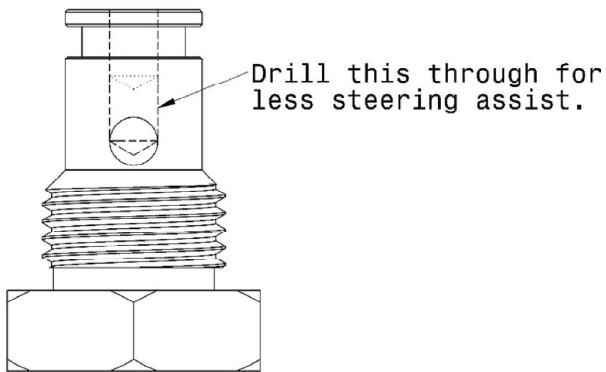
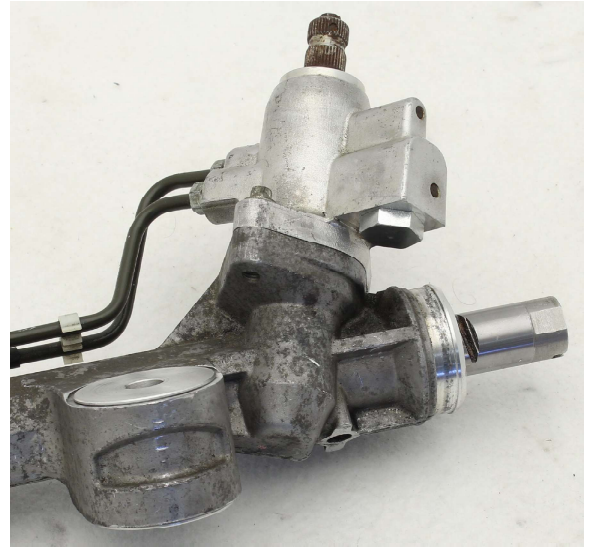
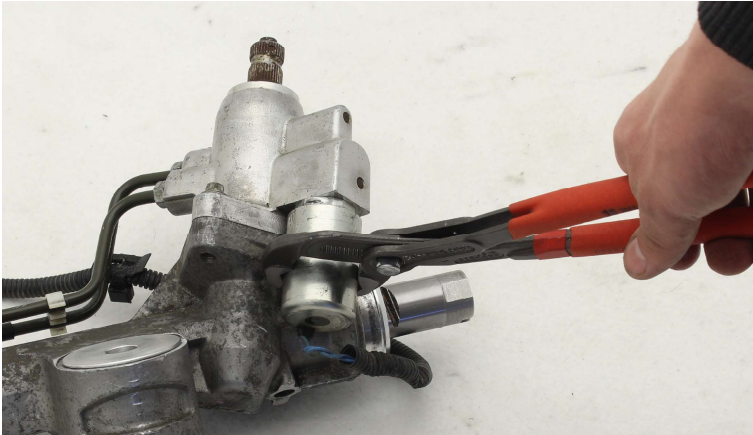


17. Remove the tie rods from the steering rack. Cut off the top metal part of the bushings, then push out the rubber boots with metal sleeve. Install the new bushings as shown in the picture.





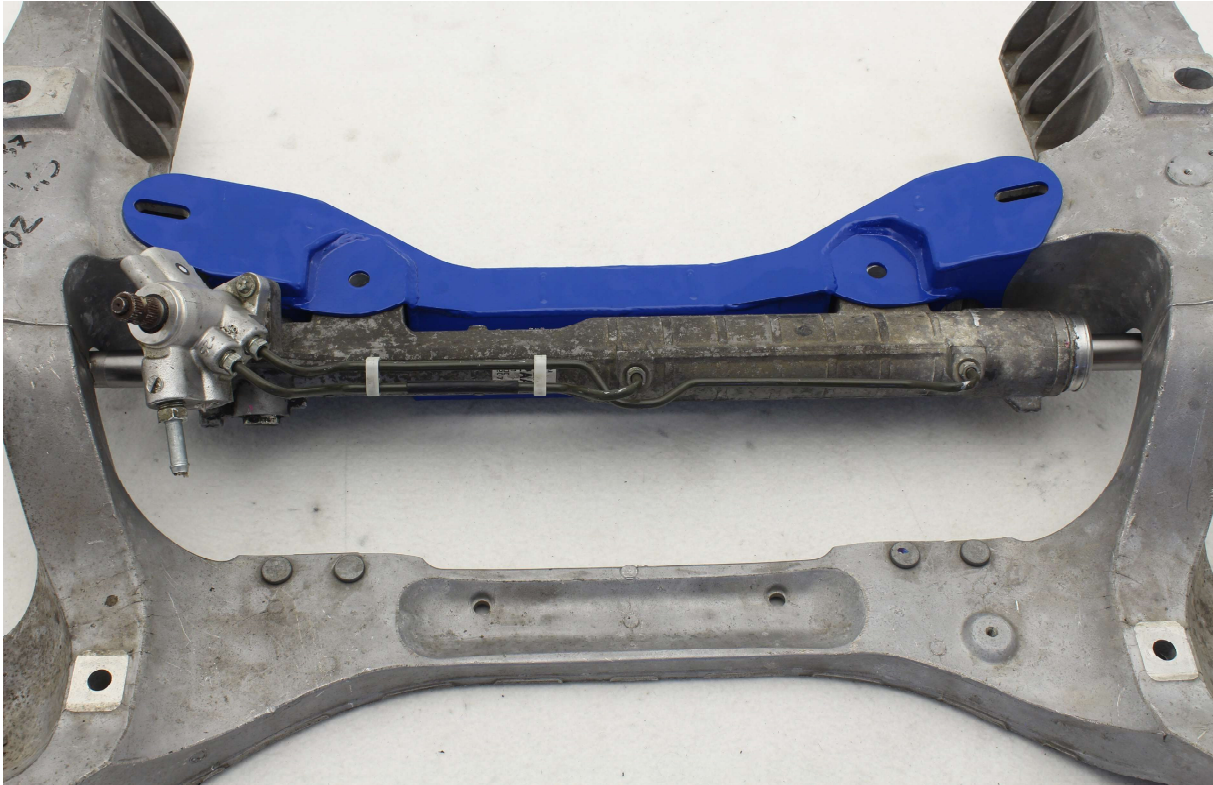
18. Turn the power steering solenoid valve out from steering rack. Use WF359\_914 to replace the solenoid. By default the fitting is set to maximum assist(lightest steering). If You need less assist(more steering effort), drill the fitting with a 4mm drill until it is through to the radial hole. If You want to fine tune the power assist, You can start with a smaller drill or drill the holes bigger. Stock O-rings can be used, but we recommend using new ones.



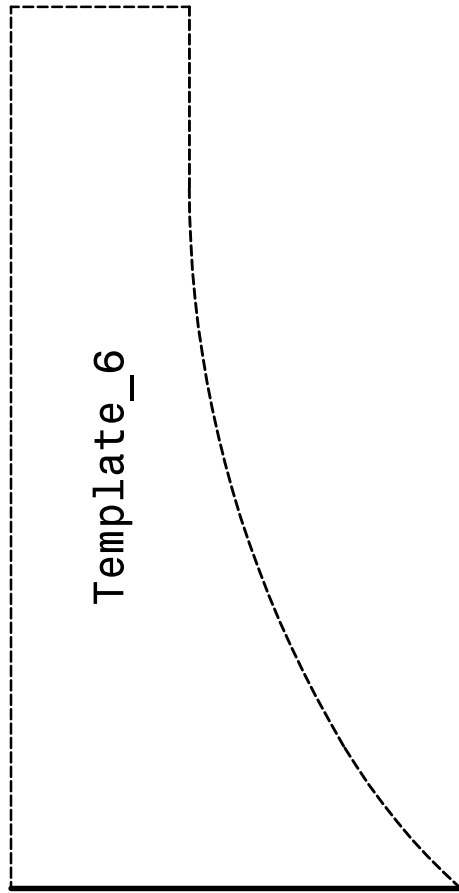
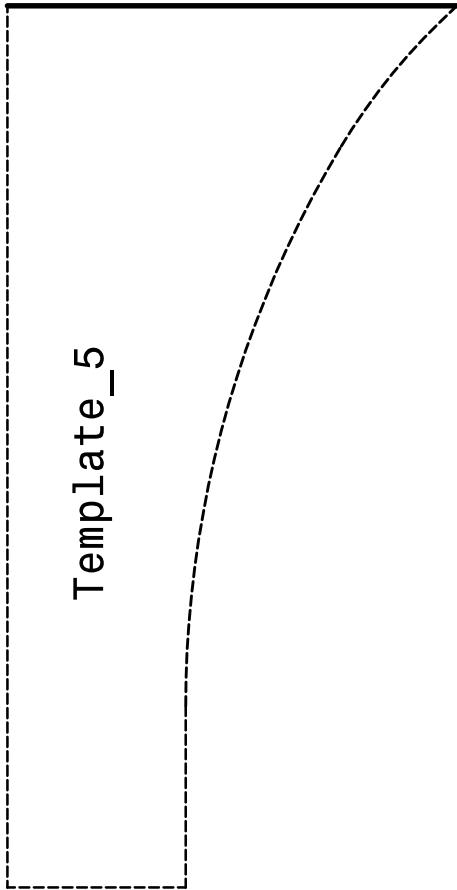
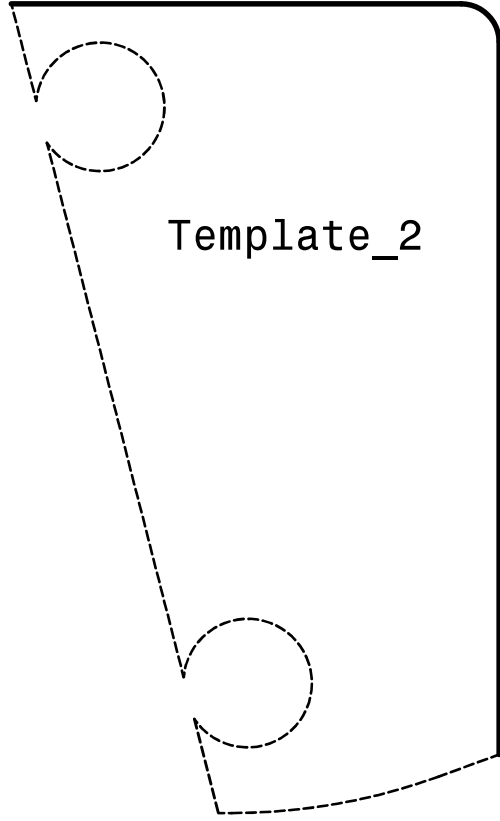
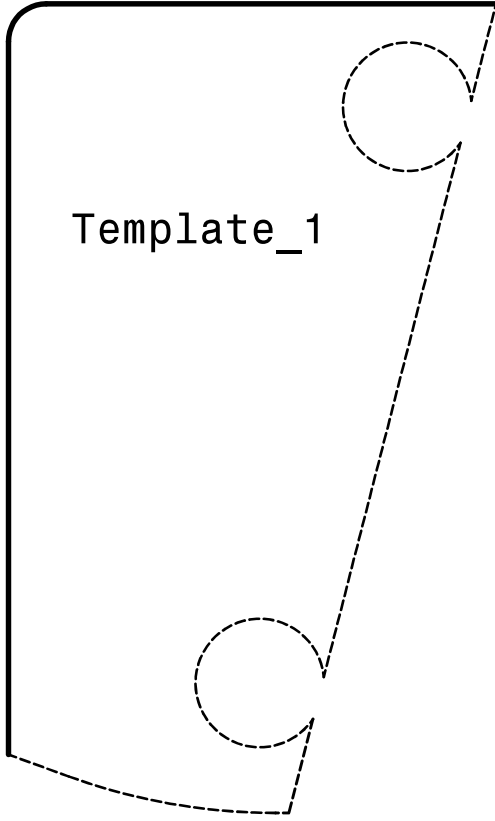
19. Insert the rack extenders.



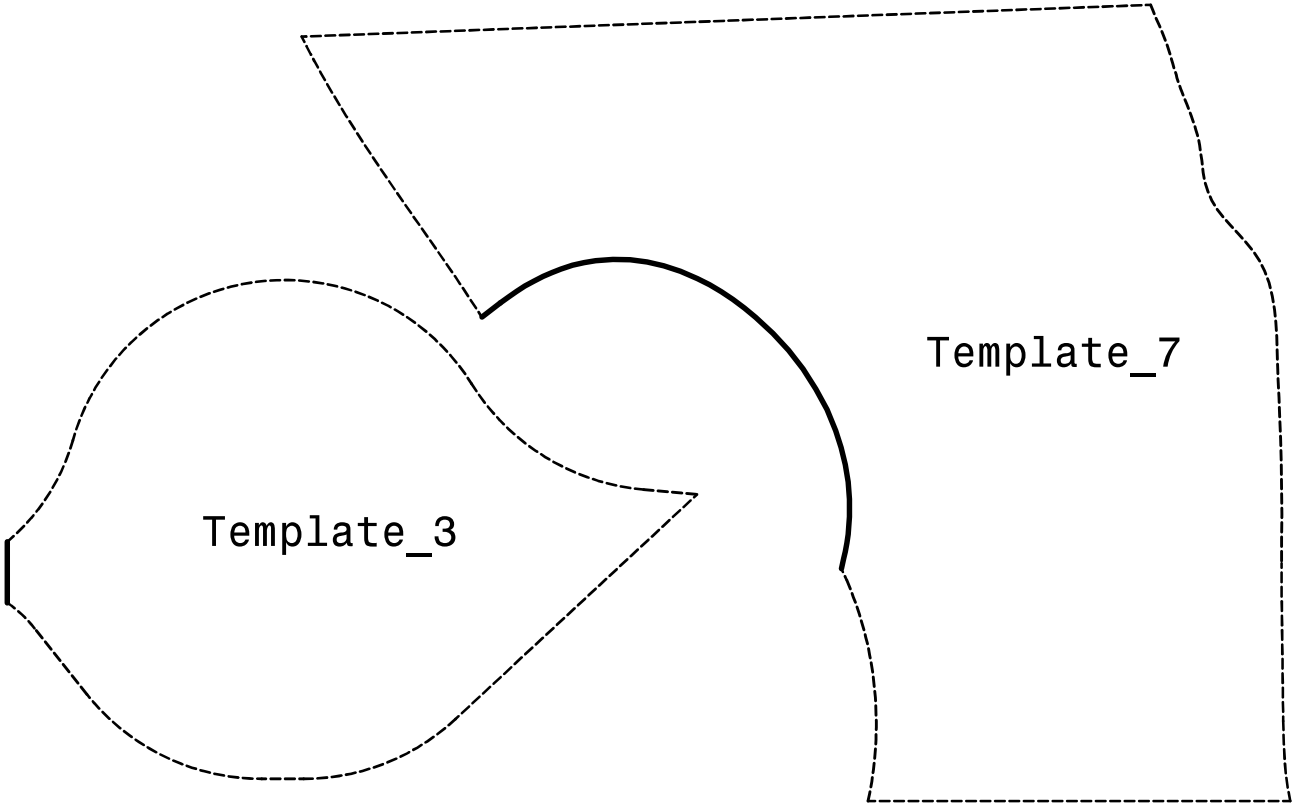
20. Insert the steering rack to modified subframe and check if there is no interference. If there are, use a grinder to grind off the excess material. If tie rods rubber interfere with subframe, enlarge the opening in the subframe.



21. Mount the modified subframe to car. Mount the steering rack and subframe brace with stock bolts. Tighten all bolts. If steering rack mounting bolts are too long, cut them shorter.

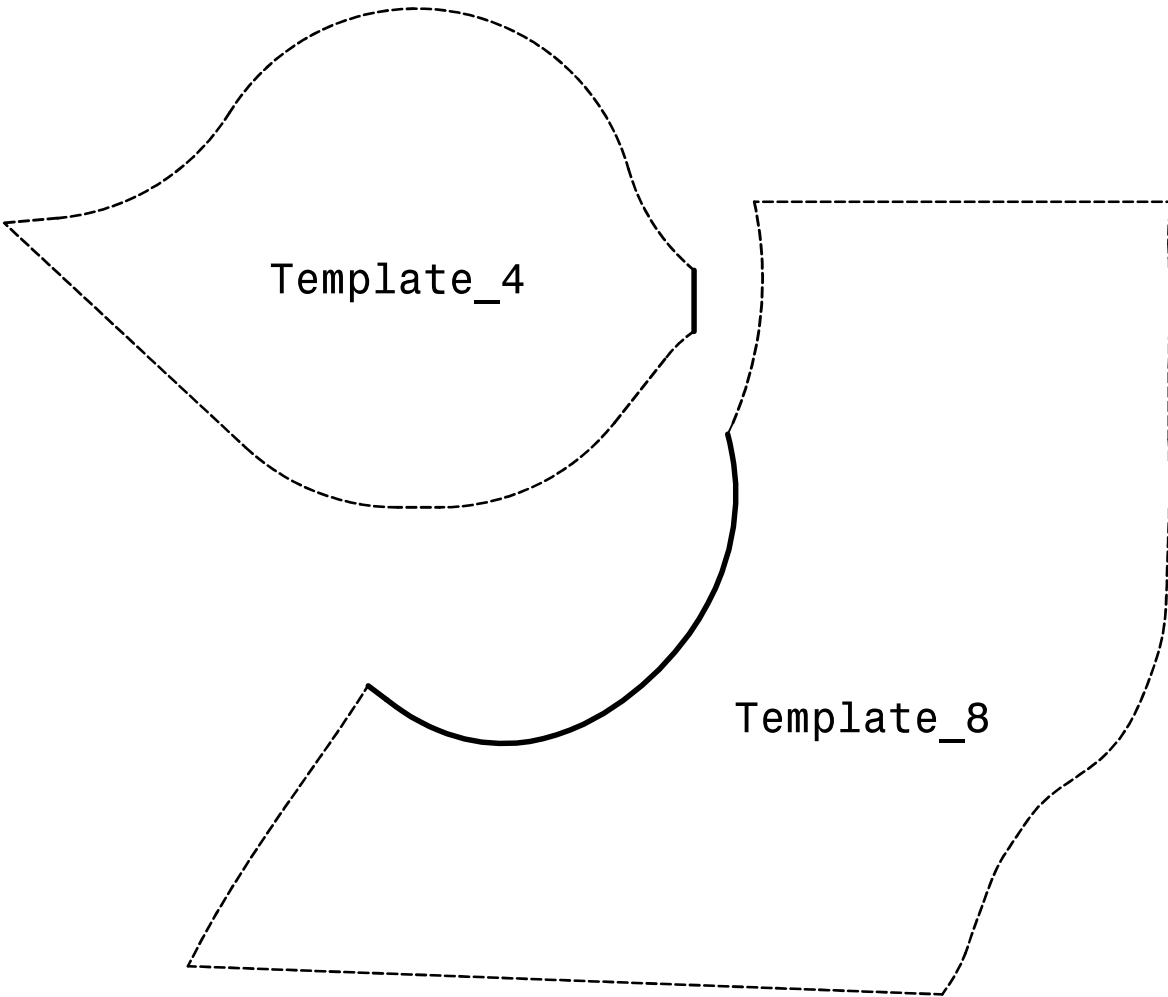


127.00mm / 5"  
Scale Check



Template\_3

Template\_7



Template\_4

Template\_8



127.00mm / 5"  
Scale Check